

# CoPilot plugin for FF B767-300

## (how to Install and Use)

### features:

- + animated 3d CoPilot model
- + recognize and execute voice/menu/widget commands
- + speak
- + read checklists
- + operate with Events (based on flight parameters and situation)
- + execute SOP (Normal Procedures, Limited)



# LICENSE AGREEMENT

By installing this Software product («JARDesign CoPilot» - X-Plane 11 plugin), you agree to be bound by the terms of this Agreement. If you do not agree to the terms of this Agreement, please, do not install or use the Product.

You may install the Software onto a single computer for your personal, noncommercial use subject to these conditions:

1. You may not copy, modify, rent, sell, distribute or transfer any part of the Software except as provided in this Agreement, and you agree to prevent unauthorized copying of the Software.
2. You may not reverse engineer, decompile, or disassemble the Software.
3. You may not sublicense or permit simultaneous use of the Software by more than one user.
4. The Software may include portions offered on terms in addition to those set out here, as set out in a license accompanying those portions.
5. REFUND POLICY: As you have ability to use DEMO version and check is it work or not BEFORE purchase, NO REFUND may be given.
6. Serial key may be activated with one aircraft installed for only one Computer ID. After first activation your serial key may be used with the same aircraft at the same computer (detected as Computer ID).

THE SOFTWARE IS PROVIDED "AS IS" WITHOUT ANY EXPRESS OR IMPLIED WARRANTY OF ANY KIND INCLUDING WARRANTIES OF MERCHANTABILITY, NONINFRINGEMENT, OR FITNESS FOR A PARTICULAR PURPOSE.

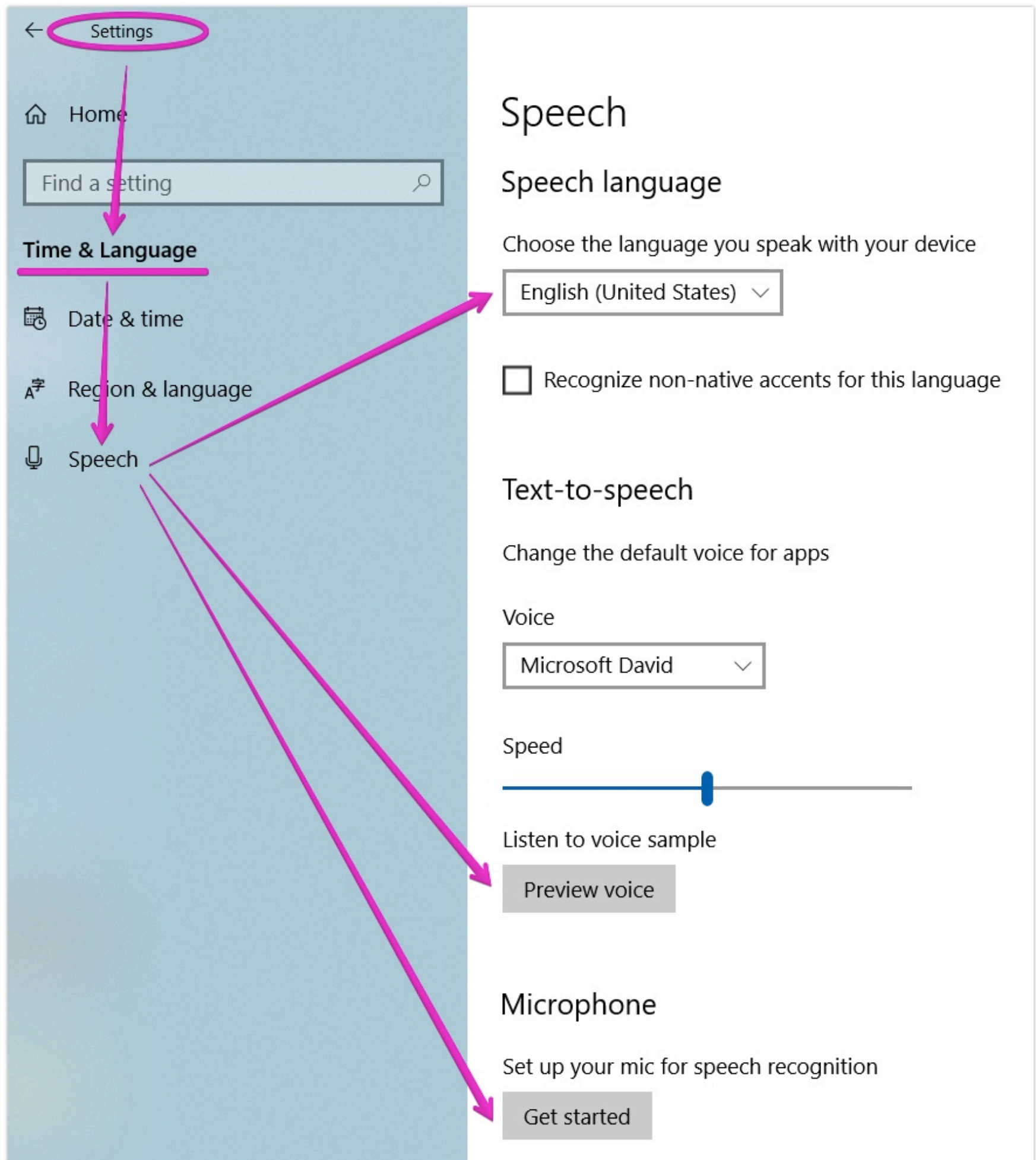
JARDesign Group does not warrant or assume responsibility for the accuracy or completeness of any information, text, graphics, links or other items contained within the Software.

## STEP-BY-STEP

1. Setup speech/recognition engine at your computer (read below)
2. Copy CoPilot plugin files to your compatible aircraft "/plugins/" folder (read below)
3. Load aircraft and setup plugin.
4. Check what you see copilot in cockpit, it animated, speak and recognize your voice command.
5. Use.

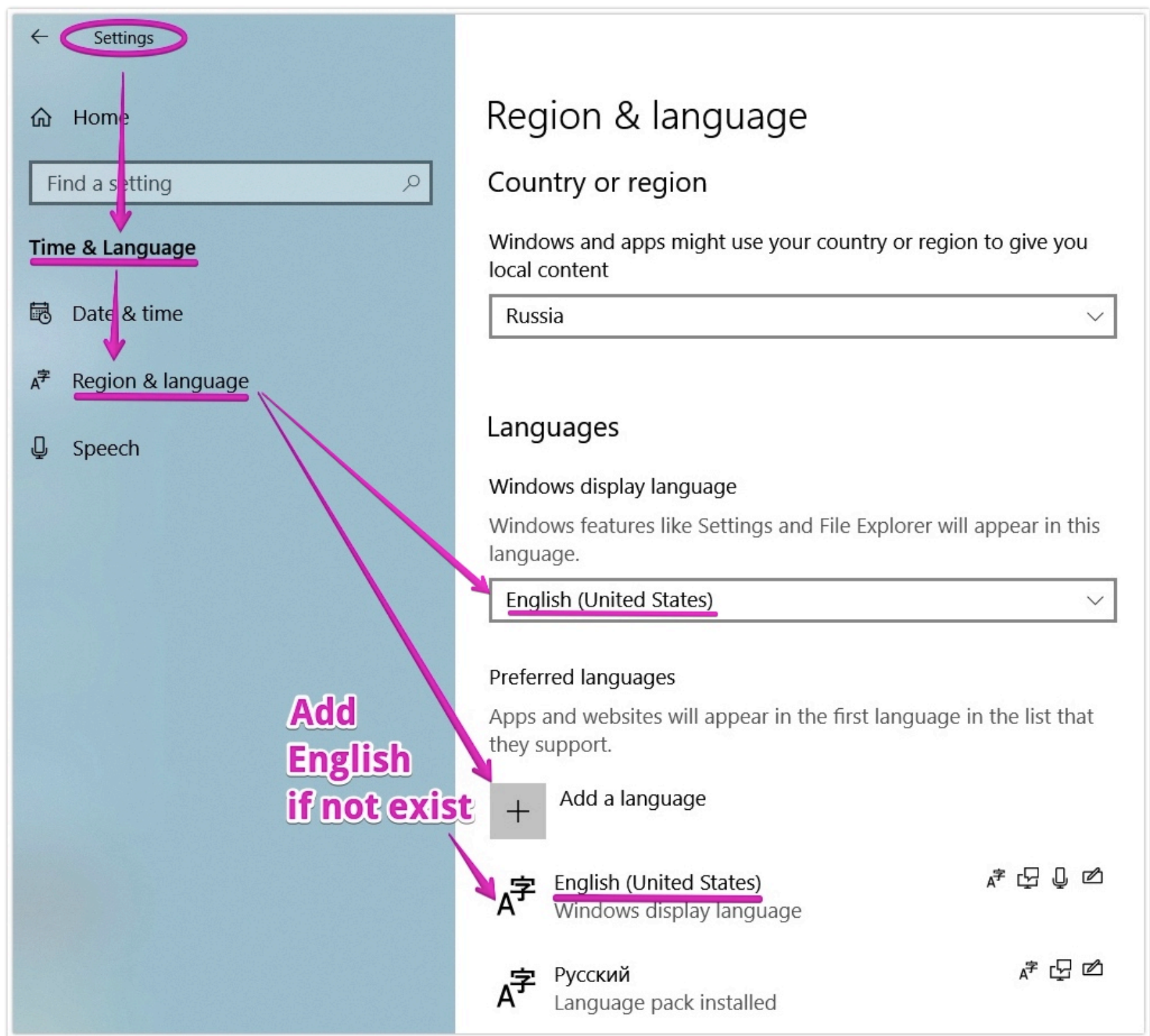
# SETUP SPEECH RECOGNITION (WINDOWS 10)

Please be sure what US English language pack is already installed and English selected as Windows display language

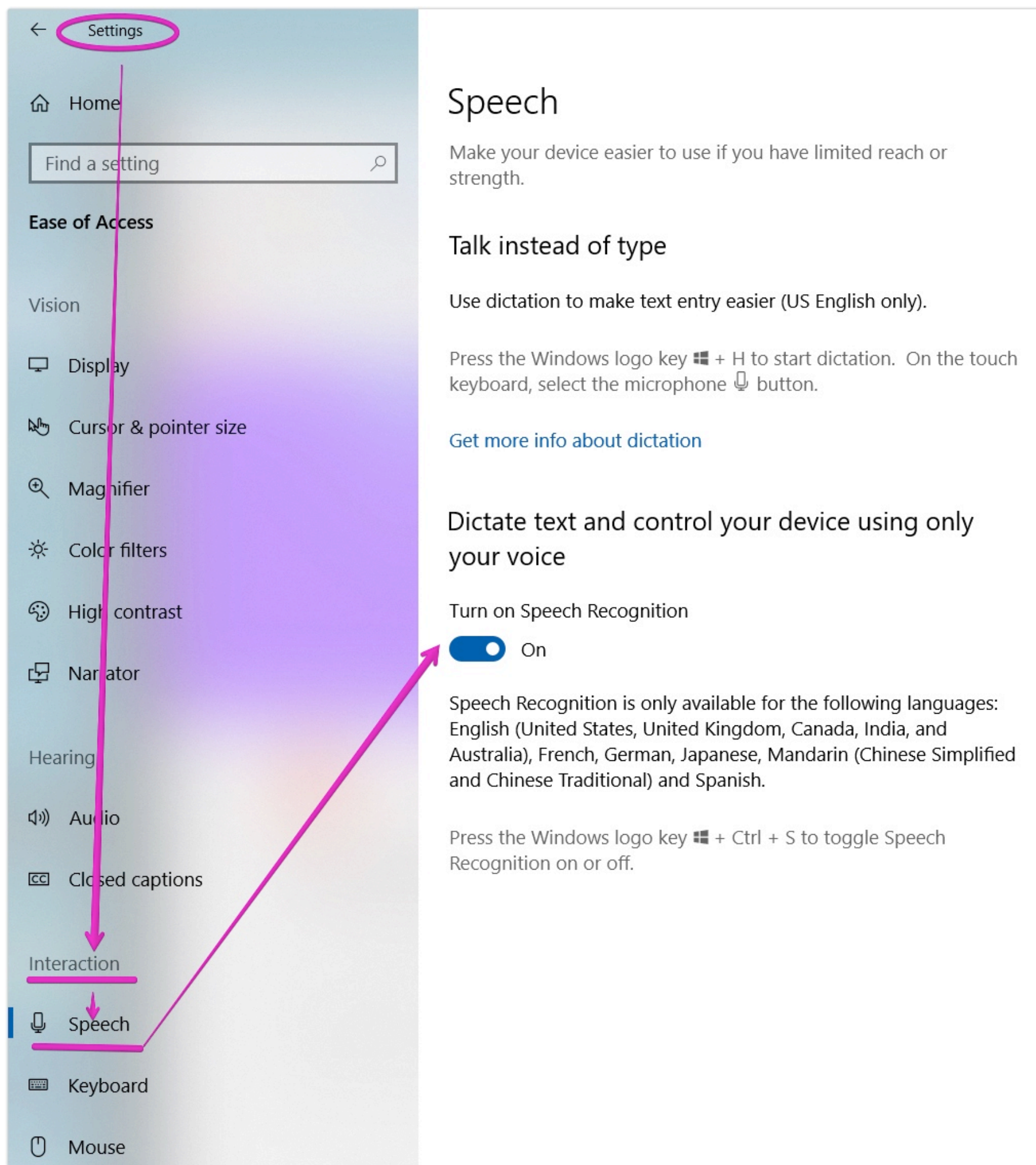




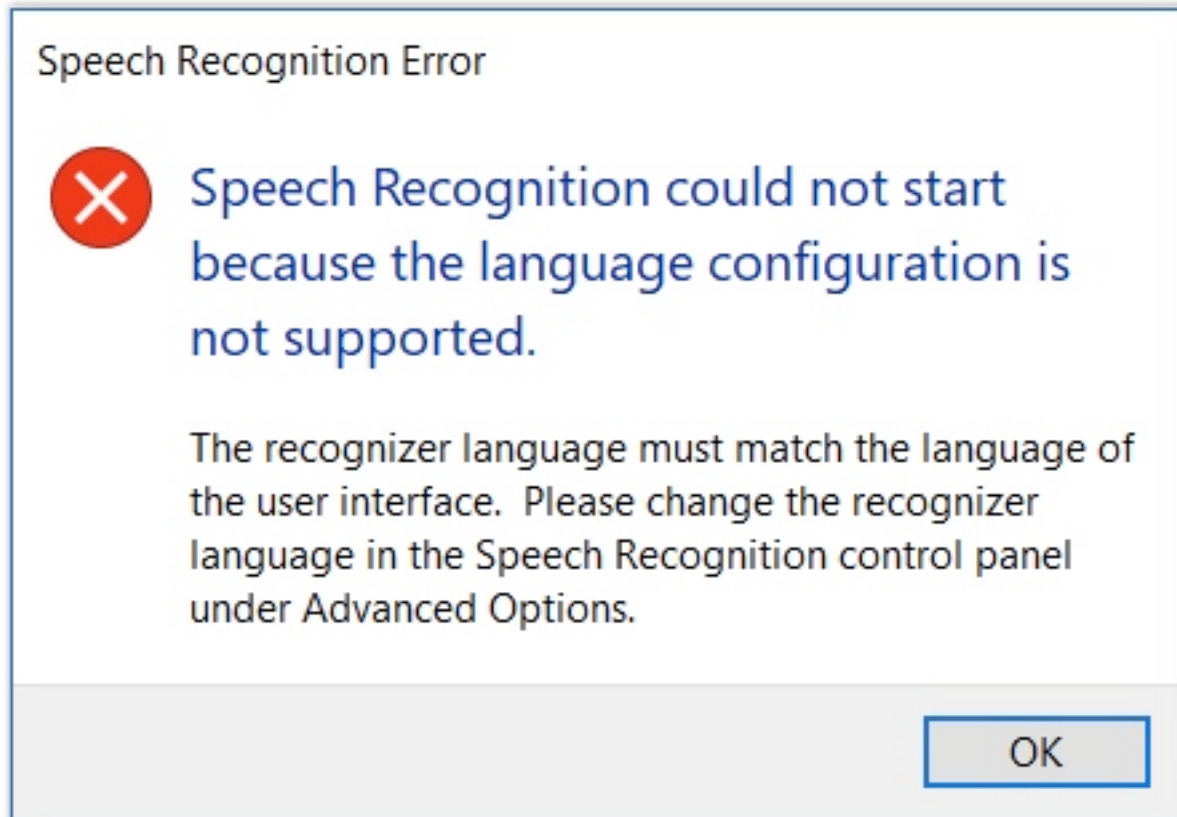
Please select English language for Recognition, run voice preview, setup microphone.



Next turn recognition On (You may skip this step if you have Non-English interface at your Windows)



If you will get this error, you need setup English as user interface language (Windows display language) and English as your recognition language (language you speak with your device) and reload computer.

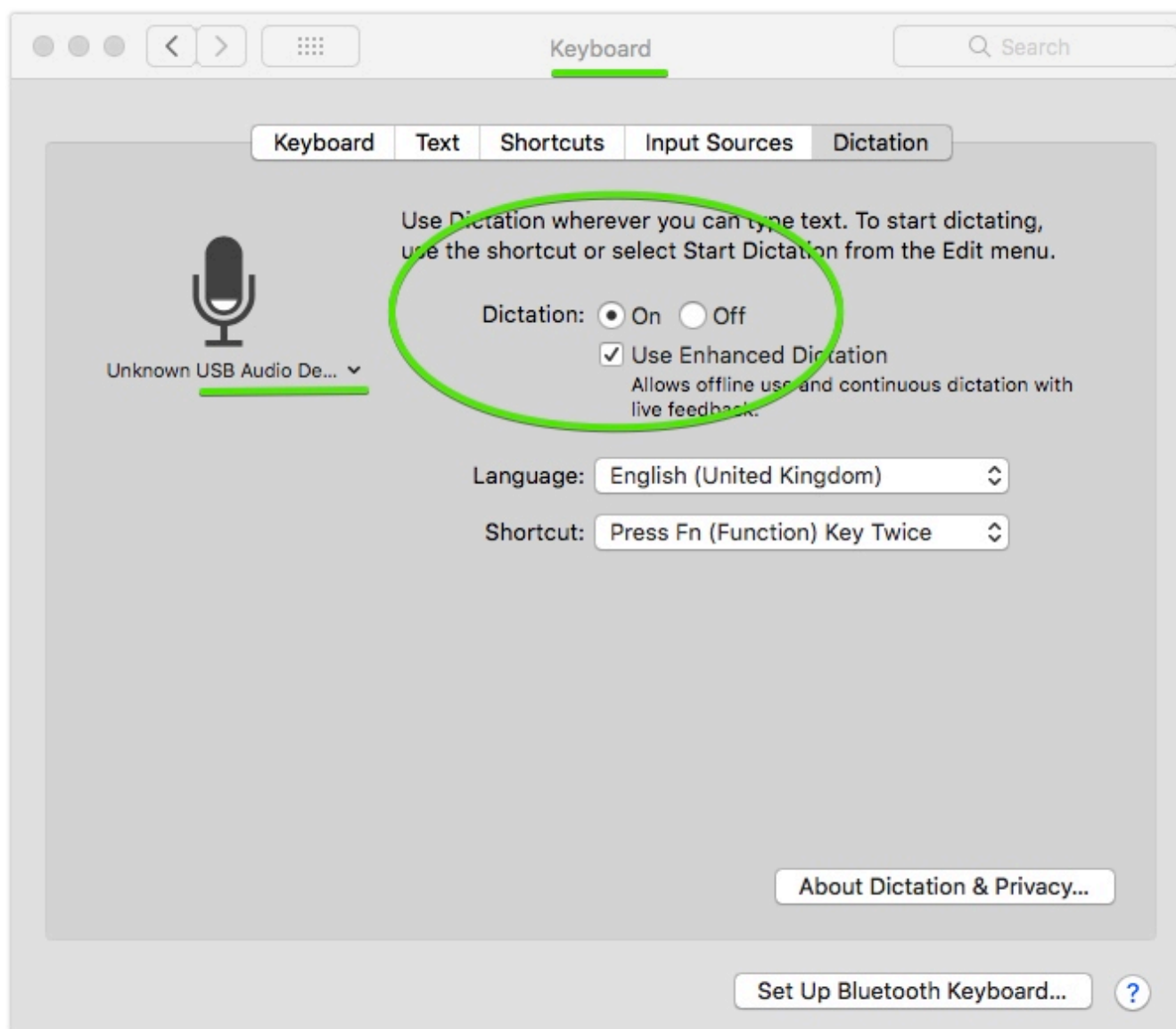
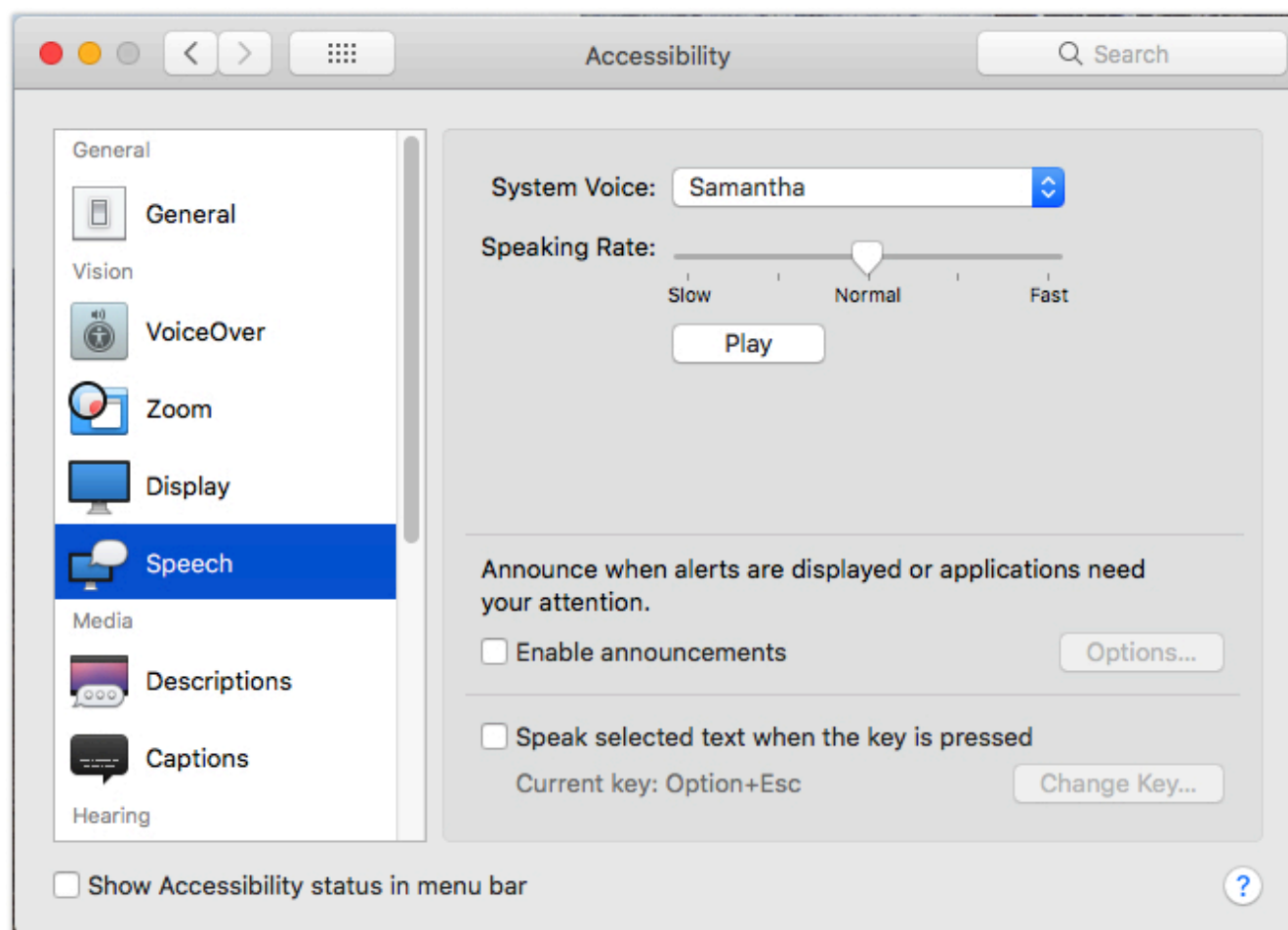


**Please use this basic manual if need:**

<https://www.windowcentral.com/how-set-speech-recognition-windows-10>



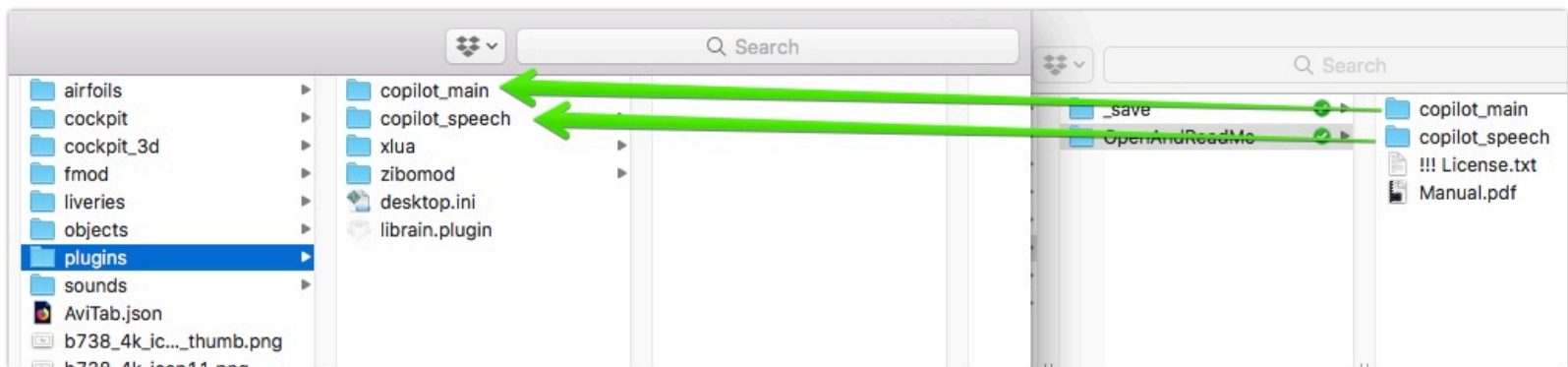
# SETUP SPEECH / RECOGNITION (MAC OS)





# INSTALL PLUGIN

1. Find your aircraft FF Boeing 767-300 "plugins" folder inside ../X-Plane\_11/Aircraft/Boeing 767-300/plugins/ or path like this.
2. UnZip copilot distributive and Put "copilot\_main" and "copilot\_speech" folders from your ZIP pack to "../Boeing 767-300/plugins/" folder



3. Run X-Plane and load Boeing 767-300. Select "Setup" to complete installation.
4. Reload aircraft

# HARDWARE SETUP

For voice input - **You need** to have microphone or headset to use this plugin. Speech recognition should be setup and checked on your OS before copilot plugin installation.

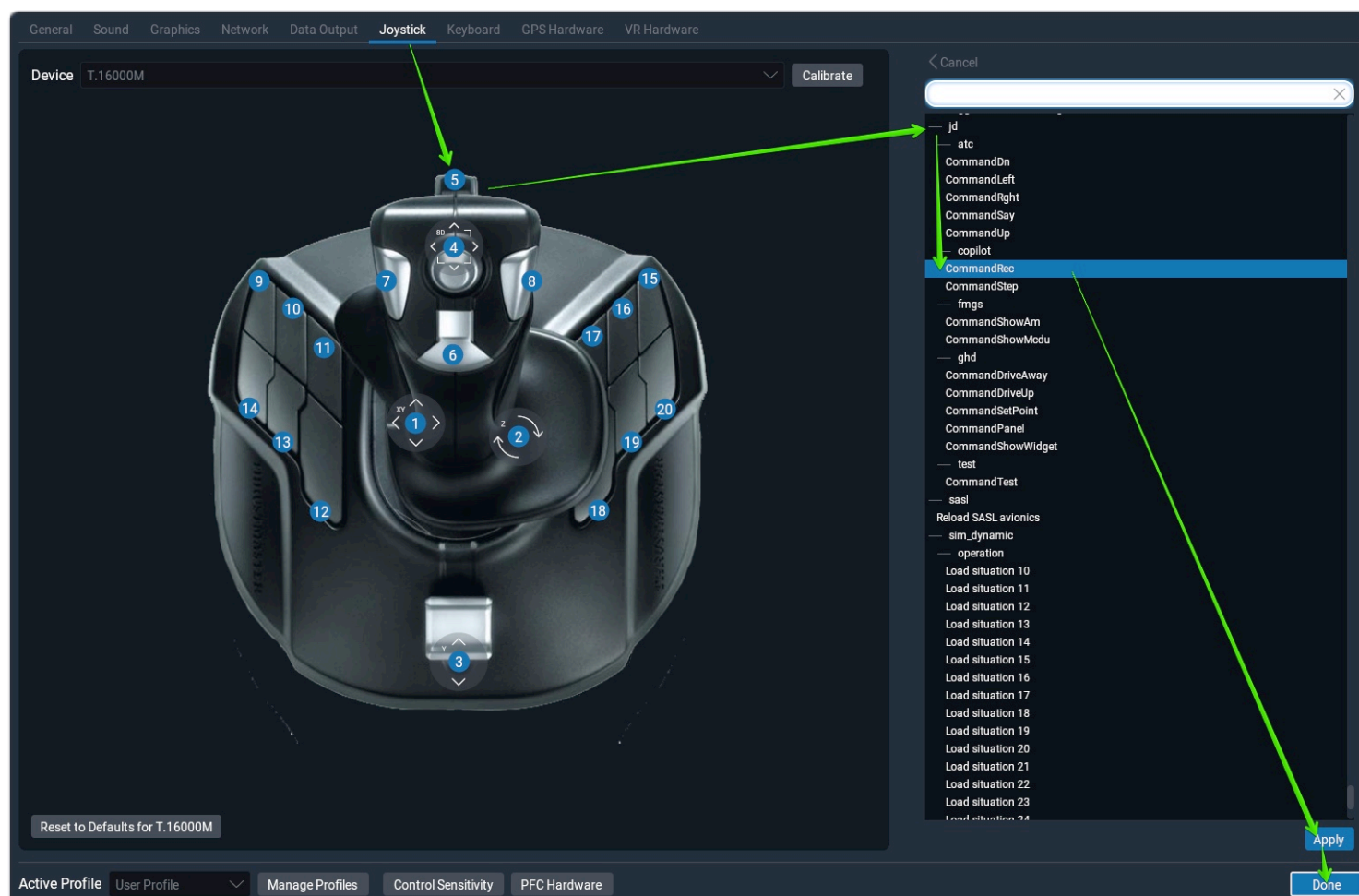
For mouse click input - **You need** setup your Windows/MACOS speech settings only and skip voice recognition setup.

# HOW TO USE

You may speak with CoPilot via voice or select commands via Menu or select command via widget. When you run checklist - expected answers (clickable) will be indicated in yellow.

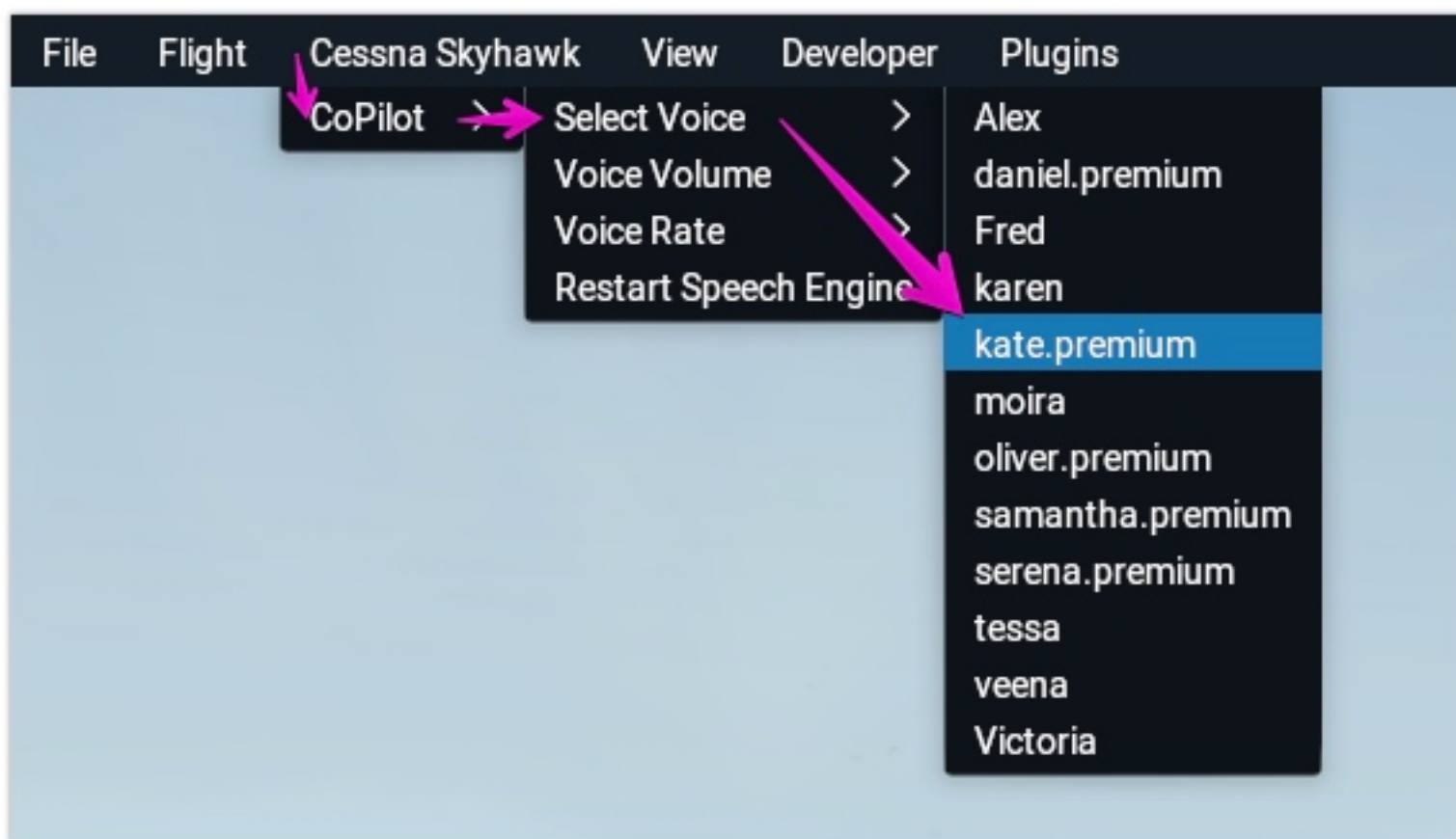


If you prefer voice control, you need setup special joystick (sure, keyboard may be used too) button to jd/CommandRec.



You may look at CoPilot, hold this joystick button and say something like "Hello!" Typical pattern - press the button, say the text, release the button.

You can change speech parameters using Menu, like this:



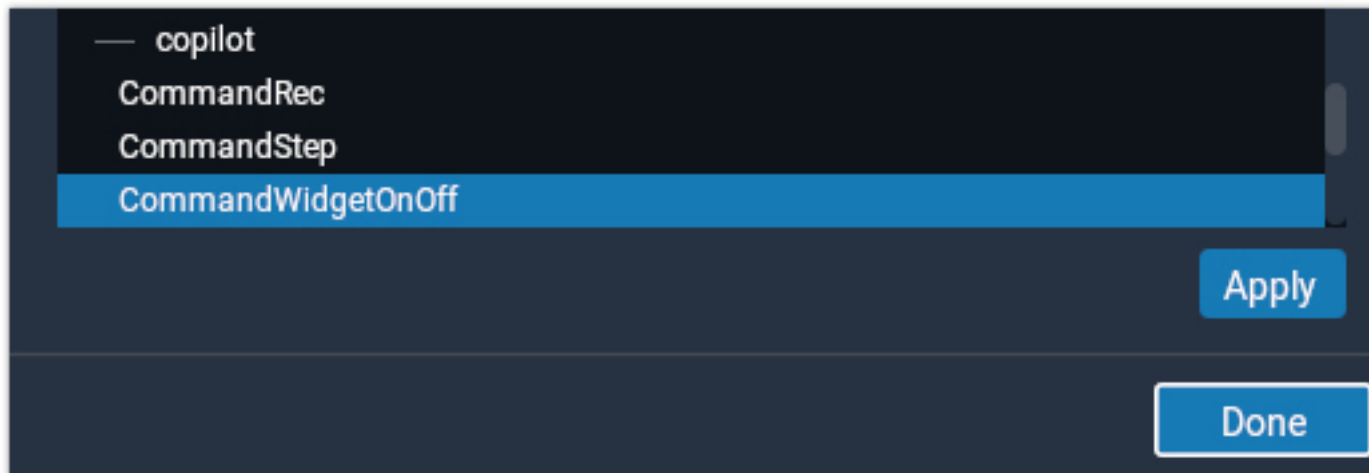
## HOW TO KNOW WHAT COMMANDS MAY BE USED

1. Use Menu -> CoPilot -> Commands to see full list of commands what may be activated by voice, by this menu or by widget menu.



## WIDGET

Widget may show you a shortlist of commands for actual flight phase. Sure, any command may be used in any time by menu or by voice input. You may show and hide widget using this command (assign it to your keyboard or joystick):



You may change widget position using "MOVABLE" zone:



## HOW TO UNINSTALL PLUGIN

1. Use Menu -> Uninstall CoPilot. Reload aircraft. CoPilot not work more.
2. Delete "copilot\_main" and "copilot\_speech" folders from "../Boeing 767-300/plugins/" folder

### PRODUCT WEBPAGE:

<http://www.jar.design.org>

### SUPPORT

<http://www.support.jar.design.org>



# NORMAL CHECKLIST (EXAMPLE)

## Boeing 767-300ER Normal Checklists

PREFLIGHT	
B	Oxygen ..... TESTED, 100% (BOTH)
F/O	Pressurization mode selector ..... AUTO
B	Flight instruments ..... HDG ___, ALT ___ (BOTH)
C	Parking brake ..... SET
C	Fuel control switches ..... CUTOFF
C	Gear pin ..... REMOVED
DESCENT	
	Pressurization ..... LDG ALT ___ PM
	Seat belt sign ..... ON PM
	Recall ..... CHECKED PM
	Autobrake ..... PF
	Landing data ..... VREF ___, Minimums ___ (BOTH) B
	Approach briefing ..... COMPLETED PF
BEFORE START	
C	Fuel ..... KGS
F/O	Passenger signs ..... ON
B	Windows ..... LOCKED (BOTH)
B	MCP ..... V2 ___, HDG ___, ALT ___, LNAV
F/O	Takeoff thrust ..... °C/No assumed, ___ K
B	Takeoff speeds ..... V1 ___, VR ___, V2 ___ (BOTH)
B	CDU preflight ..... COMPLETED
C	Rudder and aileron trim ..... 0, 0
C	Taxi and takeoff briefing ..... COMPLETED
F/O	Flight deck door ..... CLOSED and LOCKED
F/O	Red anti collision light ..... ON
APPROACH	
	Altimeters ..... QNH ___ (BOTH) B
	NAV aids ..... SET PF
LANDING	
	Cabin ..... SECURE PM
	Speedbrake lever ..... ARMED PF
	Landing gear ..... DOWN, 3 GREEN B
	Flaps ..... B
SHUTDOWN	
	Hydraulic panel ..... SET F/O
	Fuel pumps ..... OFF F/O
	Speedbrake lever ..... DOWN DETENT C
	Flaps ..... UP F/O
	Parking brake ..... SET C
	Fuel control switches ..... CUTOFF B
	Weather radar ..... OFF (BOTH) B
BEFORE TAXI	
F/O	Anti-ice ..... AS RQRD
F/O	L & R isolation valve ..... OFF
C	Recall ..... CHECKED
C	Autobrake ..... RTO
B	Ground equipment ..... CLEAR (BOTH)
BEFORE TAKEOFF	
C	Takeoff briefing ..... REVIEWED
F/O	Packs ..... AUTO / OFF
F/O	Flaps .....
C	Stabilizer trim ..... UNITS
C	Speedbrake lever ..... DOWN DETENT
C	Flight controls ..... CHECKED
C	Cabin ..... SECURE
AFTER TAKEOFF	
PM	Packs ..... AUTO
PM	Landing gear ..... UP and OFF, NO LIGHTS
PM	Flaps ..... UP
	Altimeters ..... SET (BOTH)
SECURE	
	IRS selectors ..... OFF F/O
	Emergency exit lights ..... OFF F/O
	Window heat ..... OFF F/O
	Packs ..... OFF F/O
	GND PWR ..... OFF F/O
	APU ..... OFF F/O
	Standby power selector ..... OFF F/O
	Battery ..... OFF F/O
	Ground service bus ..... ON