



[OFF]

```

-----
JAR0001  21MAY2017  CYVR-KEAT  A332 N315SB  RELEASE 1152 21MAY17
OFF 1    VANCOUVER INTL-PANGBORN MEML
                               WX PROG 2112 2115   OBS 2106 2106

```

```

ATC C/S   JAR001      CYVR/YVR  KEAT/EAT   CRZ SYS    CI 48
21MAY2017 N315SB      1215/1235 1312/1320 GND DIST   186
A330-200 / CF6-80E1A4          STA 1320   AIR DIST   179
                               CTOT:....  G/C DIST   161

```

```

MAXIMUM   TOW 232999  LAW 182000  ZFW 169999  AVG WIND    355/017
ESTIMATED TOW 172584  LAW 168110  ZFW 162623  AVG W/C     P012
                               AVG ISA     P006
                               AVG FF KGS/HR 7177
                               FUEL BIAS    P00.0
                               TKOF ALTN     .....

```

```

ALTN KSEA
FL STEPS CYVR/0250/

```

```

-----
DISP RMKS  NIL

```

```

-----
PLANNED FUEL

```

FUEL	ARPT	FUEL	TIME
TRIP	EAT	4474	0037
CONT 15 MIN		1417	0015
ALTN	SEA	1904	0021
FINRES		2166	0030
MINIMUM T/OFF FUEL		9961	0144
EXTRA		0	0000
T/OFF FUEL		9961	0144
TAXI	YVR	544	0020
BLOCK FUEL	YVR	10505	
PIC EXTRA		
TOTAL FUEL		
REASON FOR PIC EXTRA		

```

-----
NO TANKERING RECOMMENDED (P)

```

```

-----
I HEREWITH CONFIRM THAT I HAVE PERFORMED A THOROUGH SELF BRIEFING
ABOUT THE DESTINATION AND ALTERNATE AIRPORTS OF THIS FLIGHT
INCLUDING THE APPLICABLE INSTRUMENT APPROACH PROCEDURES, AIRPORT
FACILITIES, NOTAMS AND ALL OTHER RELEVANT PARTICULAR INFORMATION.

```

```
DISPATCHER: JAMIE MOORE
```

```
PIC NAME: KREITMANN, ILAN
```

```
TEL: +1 800 555 0199
```

```
PIC SIGNATURE: .....
```



ALTERNATE ROUTE TO:				FINRES			4070
APT	TRK	DST	VIA	FL	WC	TIME	FUEL
KSEA/34R	272	86	DCT	120	P011	0021	1904

MEL/CDL ITEMS DESCRIPTION

ROUTING:

ROUTE ID: DEF RTE
CYVR/08R DCT YVR J126 YVR20 DCT NORMY J12 BLUIT DCT KEAT/30

DEPARTURE ATC CLEARANCE:

.
.
.

OPERATIONAL IMPACTS

WEIGHT CHANGE UP 1.0	TRIP P 0010 KGS	TIME M 0000
WEIGHT CHANGE DN 1.0	TRIP M 0022 KGS	TIME P 0000
FL CHANGE UP FL1	TRIP P 0004 KGS	TIME M 0000
FL CHANGE DN FL1	TRIP P 0001 KGS	TIME P 0000
FL CHANGE DN FL2	TRIP P 0017 KGS	TIME M 0000
SPD CHANGE CI 0	TRIP M 0322 KGS	TIME P 0000
SPD CHANGE CI 400	TRIP P 0053 KGS	TIME M 0000



ATIS:
.

RVSM: ALT SYS LEFT: STBY: RIGHT:

TIMES

	ESTIMATED	SKED	ACTUAL
OUT	1215Z/0515L	1215Z/0515LZ
OFF	1235Z/0535L	1235Z/0535LZ
ON	1312Z/0612L	1312Z/0612LZ
IN	1320Z/0620L	1320Z/0620LZ
BLOCK TIME	0105	0105

WEIGHTS

	EST	MAX	ACTUAL
PAX	240	
CARGO	15.0	
PAYLOAD	40.0	
ZFW	162.6	170.0
FUEL	10.5	24.4 POSS EXTRA 13.9
TOW	172.6	186.5	LDG.....
STAB TRIM		
LAW	168.1	182.0

TERRAIN CLEARANCE CHECK

DD CHECK - TERRAIN CLEARANCE CHECK DISABLED

DP CHECK - TERRAIN CLEARANCE CHECK DISABLED



FLIGHT LOG

MOST CRITICAL MORA 11600 FEET AT TOC///MXSHR 02 AT TOC

AWY	FL	IMT	MN	WIND	OAT	EFOB	PBRN			
POSITION	LAT	EET	ETO	MORA	ITT	TAS	COMP	TDV	AFOB	ABRN
IDENT	LONG	TTLT	ATO	DIS	RDIS	GS	SHR	TRP		
VANCOUVER I	N4911.7		...	113	152				10.0	0.5
CYVR	W12311.0	0000	...		168		P002			
					186	356		
DCT				102	159	.54	310/002	01	9.4	1.1
VANCOUVER	N4904.6	0003	...	113	175		P002	P06		
YVR	W12308.9	0003	...	7	179	356		431
SEATTLE FIR/UIR										
-KZSE	N4900.0	0000	...							
	W12308.3	0003	...	0	179					
VANCOUVER FIR										
-CZVR	N4853.6	0001	...							
	W12307.5	0004	...	5	174					
J126				198	128	.66	345/012	M17	8.5	2.0
YVR20	N4844.7	0002	...	94	144		P012	P08		
YVR20	W12306.3	0006	...	15	159	428		431
SEATTLE FIR/UIR										
-KZSE	N4844.2	0000	...							
	W12305.8	0006	...	0	159					
DCT				250	128	.74	339/024	M27	7.2	3.3
T O C	N4822.8	0004	...	116	144	455	P023	P08		
	W12242.7	0010	...	27	132	478	2	434
DCT				250	129	.69	352/026	M27	6.5	4.0
T O D	N4736.1	0008	...	116	145	419	P023	P08		
	W12153.8	0018	...	57	75	442	2	428
DCT				207	076	.67	006/021	M18	6.4	4.1
NORMY	N4725.8	0003	...	116	091		P016	P08		
NORMY	W12143.3	0021	...	13	62	439		430
J12				037	077	.40	039/008	11	6.2	4.3
BLUIT	N4724.4	0010	...	116	092		M005	P03		
BLUIT	W12025.1	0031	...	53	9	261		413
DCT									5.5	5.0
PANGBORN ME	N4723.9	0006	...							
KEAT	W12012.4	0037	...	9				



WIND INFORMATION

CLIMB			T O C			T O D			DESCENT		
350	318/043	-52	290	331/030	-37	290	343/035	-37	350	348/065	-54
310	324/033	-42	270	335/027	-32	270	346/030	-32	310	354/057	-44
200	344/012	-17	250	339/024	-27	250	351/026	-27	200	011/024	-18
150	006/007	-08	230	345/020	-22	230	357/022	-23	150	031/011	-08
100	301/002	+01	210	352/017	-18	210	002/019	-19	100	066/011	+00



[ATC Flight Plan]

ICAO FLIGHT PLAN

FF CZVRZQZX KZSEZQZX
211152 CYULSBFP
(FPL-JAR001-IS
-A332/H-SDE3GHIJ2J3J5M1RVWXY/LB2D1
-CYVR1215
-N0420F250 DCT YVR J126 YVR20 DCT NORMY J12 BLUIT DCT
-KEAT0037 KSEA
-PBN/A1B1C1D1O1S2 DOF/170521 REG/N315SB EET/KZSE0003 CZVR0004
KZSE0006 OPR/JAR RMK/TCAS)



[Additional Info]

D I S P A T C H B R I E F I N G I N F O JAR0001 CYVR/KEAT



[Airport WX List]

CYVR --> KEAT JAR 001 / 21MAY2017
LIDO/WEATHER SERVICE DATE : 21May2017 TIME : 11:52 UTC

AIRMETs:

No Wx data available

SIGMETs:

No Wx data available

Tropical Cyclone SIGMETs:

No Wx data available

Volcanic Ash SIGMETs:

No Wx data available

Departure:

CYVR/YVR VANCOUVER INTL

SA 211100 12002KT 20SM SKC 12/10 A3024 RMK SLP242
FT 211142 2112/2218 VRB03KT P6SM SKC
FM211600 28010KT P6SM SCT220
BECMG 2206/2208 VRB03KT
FM221600 28008KT P6SM SKC
RMK NXT FCST BY 211500Z

Destination:

KEAT/EAT PANGBORN MEML

SA 211055 AUTO 33008KT 10SM CLR 14/08 A3021 RMK AO2 SLP227
T01440078
FT 211120 2112/2212 34007KT P6SM SKC
FM212100 18003KT P6SM SKC
FM220100 14005KT P6SM FEW250
FM220600 31007KT P6SM FEW250

Destination Alternates:

KSEA/SEA SEATTLE-TACOMA INTL

SA 211053 34004KT 10SM CLR 13/08 A3023 RMK AO2 SLP241 T01280083
FT 211125 2112/2218 02004KT P6SM SKC
FM211800 35008KT P6SM FEW200
FM212200 34011KT P6SM SCT200
FM220600 02008KT P6SM SKC
FM221200 03004KT P6SM SKC

AIRPORTLIST ENDED



[NOTAM]

 LIDO-NOTAM-BULLETIN INCLUDES NOTAM, COMP NOTAM AND AIP-REGULATION
VALID: 1705211215 - 1705211614 STD(EOBT)+TRIP+ALTN+3HRS
 JAR 001 /21MAY OFP-NR: 1
 ROUTE: CYVR - KEAT ALTN: KSEA
 N0420F250 DCT YVR J126 YVR20 DCT NORMY J12 BLUIT DCT

=====
DEPARTURE AIRPORT - DETAILED INFO
 =====

CYVR/YVR VANCOUVER INTL

+++++ AIRPORT +++++

05/080

CYVR THE FOLLOWING APPLIES TO ALL STAR PROC: WHEN A LOWER ALT IS ISSUED, PILOTS SHALL DESCEND ON THE STAR PROFILE TO THE ASSIGNED ALT. CHARTED RESTRICTIONS ABV THE ASSIGNED ALT REMAIN MANDATORY.

05/040

OBST AMEND PUB: NEW TOWER 492245N 1232319W (APRX 12 NM W AD)
 110 FT AGL 2446 MSL. LGTD AND PAINTED

04/096

CYVR APN VI TAXI EASTBOUND ONTO **TWY P** RESTRICTED TO B767/A300 AND SMALLER ONLY.

APN VI TAXI WESTBOUND ONTO **TWY P** NO SIZE RESTRICTION.

TWY P RIGHT TURN ONTO **TWY M** RESTRICTED TO B767/A300 AND SMALLER ONLY. **TWY M** TO **TWY P** NO SIZE RESTRICTION.

04/062

CYVR **TWY D3 AVBL** TO B737/A321 AND SMALLER ACFT ONLY

04/038

CYVR DUE LOW LEVEL TFC, IFR ACFT ON VIS APCH **RWY 08L** OR **RWY 08R** ADZ TWR IF UNABLE TO MAINTAIN ON OR ABV **GP**.

04/037

CYVR ACFT CONDUCTING VISUAL APCH **RWY 08L** OR 26R PLAN PUB IFR MISSED APCH PROC.

03/147

CYVR AMEND PUB: MULTIPLE CRANES RADIUS 455 FT CENTRE
 491120N 1230735W (APRX 2 NM E AD) 320 FT AGL 322 MSL
 LGTD NOT PAINTED

03/144

CYVR **TWY D** EAST OF **TWY D5** CLSD

03/140

ZVR- SEA ISLAND **NDB 368 U/S**

02/170

CYVR OBST LGT **U/S** TOWER 490816N 1231202W (APRX 3 NM SSW AD)
 200 FT AGL 200 MSL

+++++ RUNWAY +++++

05/005

CYVR ALS 13 **U/S**

05/006

CYVR **RWY 13/31** CLSD, AVBL AS **TWY** SOUTH OF **TWY H2**

03/143

CYVR TKOF **RWY 26L** FM **TWY D** NOT AUTH DUE CONST



+++++ SID +++++

03/125

CYVR AMEND GEORGIA FIVE DEP: DEP RTE DESCRIPTION: DELETE:
CTC DEP CTL AFT PASSING 1500 UNLESS INSTRUCTED OTHERWISE BY ATC.

03/121

CYVR AMEND VANCOUVER NINE DEP: DEP RTE DESCRIPTION: DELETE:
CTC DEP CTL AFT PASSING 1500 UNLESS INSTRUCTED OTHERWISE BY ATC.

03/126

CYVR RICHMOND FIVE, STANLEY THREE, FRASER SIX AND
VANCOUVER NINE DEP: DEP ROUTE DESCRIPTION:
RWY 08R: REQUIRES MNM CLIMB GRADIENT OF 250 FT/NM TO 400.
DEP CLIMB RATE V/V(FPM)
GROUND SPEED 90 120 140 160 180 200 250 300
250 FT/NM 380 500 590 670 750 840 1050 1250

03/120

CYVR AMEND STANLEY THREE DEP: DEP RTE DESCRIPTION: DELETE:
CTC DEP CTL AFT PASSING 1000 UNLESS INSTRUCTED OTHERWISE BY ATC.

03/119

CYVR AMEND FRASER SIX DEP: DEP RTE DESCRIPTION: DELETE:
CTC DEP CTL AFT PASSING 1500 UNLESS INSTRUCTED OTHERWISE BY ATC.

03/118

CYVR AMEND RICHMOND FIVE DEP: DEP RTE DESCRIPTION: DELETE:
CTC DEP CTL AFT PASSING 1000 UNLESS INSTRUCTED OTHERWISE BY ATC.

+++++ APPROACH PROCEDURES +++++

05/084

CYVR **ILS CAT III RWY 26L** APCH NOT AUTH.
ILS OUTSIDE **CAT III** TOLERANCES

05/037

CYVR **ILS 13 U/S**

03/150

CYVR RNAV (GNSS) **RWY 26L** APCH: MISSED APPROACH INSTRUCTION:
TO READ 900 FT INSTEAD OF 600 FT
LNAV/VNAV MINIMA TO READ: 649 (642) 1 1/4
LNAV MINIMA TO READ: 580 (573) 1 1/4

03/151

CYVR RNAV (GNSS) **RWY 26R** APCH:
LNAV/VNAV MINIMA TO READ: 651(642) 1 1/2

Z0049/17

SEA ISLAND (VANCOUVER INTL) **NDB ZVR 368KHZ OUT OF SERVICE**

03/135

CYVR AMEND **ILS RWY 08R, ILS CAT II OR III RWY 08R** APCH:
PLAN VIEW: ADD OPR NOTE: SIMULTAENOUS APCH AUTH WITH **RWY 08L**

03/134

CYVR AMEND **ILS RWY 08L, ILS CAT II OR III RWY 08L** APCH:
PLAN VIEW: ADD OPR NOTE: SIMULTANEOUS APCH AUTH WITH **RWY 08R**

03/133

CYVR AMEND RNAV(RNP) Y **RWY 08L** APCH:
PLAN VIEW: ADD OPR NOTE: SIMULTANEOUS APCH AUTH WITH **RWY 08R**

03/132

CYVR AMEND RNAV(GNSS) **RWY 26L** APCH: PLAN VIEW: ADD OPR NOTES:
SIMULTANEOUS APCH AUTH WITH **RWY 26R**
LNAV PROC NOT AUTH DRG SIMULTANEOUS OPS

03/130

CYVR AMEND **ILS RWY 26R, ILS CAT II OR III RWY 26R** APCH:
PLAN VIEW: ADD OPR NOTE: SIMULTANEOUS APCH AUTH WITH **RWY 26L**



03/129

CYVR AMEND RNAV(GNSS) RWY 26R APCH: PLAN VIEW: ADD OPR NOTES:
SIMULTANEOUS APCH AUTH WITH RWY 26L
LNAV PROC NOT AUTH DRG SIMULTANEOUS OPS

03/128

CYVR AMEND RNAV(GNSS) RWY 08R APCH: PLAN VIEW: ADD OPR NOTES:
SIMULTANEOUS APCH AUTH WITH RWY 08L
LNAV PROC NOT AUTH DRG SIMULTANEOUS OPS

03/127

CYVR AMEND ILS RWY 26L, ILS CAT II OR III RWY 26L APCH:
PLAN VIEW: ADD OPR NOTE: SIMULTANEOUS APCH AUTH WITH RWY 26R

03/114

CYVR NDB/DME RWY 08R APCH NOT AUTH

+++++ STAR +++++

05/065

CYVR KEINN ONE ARR:
POWOL TRANSITION: SEGMENT FROM POWOL TO QUODY NOT AUTH
TRENA TRANSITION: SEGMENT FROM TRENA TO QUODY NOT AUTH

=====
DESTINATION AIRPORT - DETAILED INFO
=====

KEAT/EAT PANGBORN MEML

+++++ AIRPORT +++++

05/012

OBST TOWER LGT (ASR 1033940) 472711.00N1201947.00W
(5.9NM WNW EAT) 425.9FT (312.0FT AGL) OUT OF SERVICE

05/006

OBST TOWER LGT (ASR 1033276) 472349.00N1201629.00W
(2.7NM W EAT) 1044.9FT (211.9FT AGL) OUT OF SERVICE

04/027

OBST TOWER LGT (ASN UNKOWN) 471909N1201422W (4.8NM
SW EAT) 3707FT (192FT AGL) OUT OF SERVICE

+++++ RUNWAY +++++

07/017

RWY 12/30 HIRL COMMISSIONED

+++++ SID +++++

7/4354

SID PANGBORN MEMORIAL, Wenatchee, WA.
WENATCHEE ONE DEPARTURE (OBSTACLE) ...
CHANGE RWY 12, RWY 30, AND VCOA CLIMB-IN-HOLD INSTRUCTIONS TO
READ: CLIMB IN HOLDING PATTERN (E, RT, 257 INBOUND) TO CROSS EAT
VOR/DME AT OR ABOVE THE MCA/MEA FOR DIRECTION OF FLIGHT. ALL
OTHER DATA REMAINS AS PUBLISHED.

+++++ APPROACH PROCEDURES +++++

11/030

NAV VOR GND REC CHECKPOINT OUT OF SERVICE



=====
DESTINATION ALTERNATE AIRPORT(S)
=====

KSEA/SEA SEATTLE-TACOMA INTL

+++++ AIRPORT +++++

05/007
OBST TOWER LGT (ASR 1031128) 472515.90N1221717.00W
(2.0NM SSE SEA) 461.9FT (78.1FT AGL) OUT OF SERVICE

04/261
TWY Z CL MARKINGS AT RWY 16R/34L REMOVED

A1975/16
ELN VOR AIRBORNE REC CHECKPOINT CHANGED FROM 255 TO 257

+++++ RUNWAY +++++

A1656/17
RWY 16R RVR U/S
A1604/17
RWY 11/29 REDL U/S

04/262
RWY 16R/34L CL MARKINGS FADED

04/209
RWY 34R TWY DIRECTION SIGN AT TWY L SE SIDE
MISSING

+++++ SID +++++

A1493/17
TAKEOFF MINIMUMS AND (OBSTACLE) DEPARTURE PROCEDURES AMDT 4...
TAKEOFF MINIMUMS: RWY 16L, 300-1 1/2 OR STANDARD WITH A MINIMUM
CLIMB OF 244FT PER NM TO 700. ADD NOTE: RWY 16L, TEMPORARY CRANES
BEGINNING 1.27NM FROM DER, 612FT LEFT OF CENTERLINE, UP TO 250FT
AGL/ 582FT MSL (2016-ANM-1252-OE). ALL OTHER DATA REMAINS AS
PUBLISHED.

+++++ APPROACH PROCEDURES +++++

A1659/17
ILS RWY 34L CAT II/III NA

A1658/17
ILS RWY 16R CAT II/III NA

A1654/17
ILS RWY 34R DME U/S

A1655/17
ILS RWY 16L DME U/S

A1617/17
ILS RWY 16L CAT II/III NOT AUTH

A1585/17
ILS RWY 16L (CAT II AND III), AMDT 7 ...
S-ILS 16L CAT III RVR 06

**A1492/17**

RNAV (RNP) Z **RWY 34R**, AMDT 1...

RNP 0.28 DA 892/ HAT 520 ALL CATS, VISIBILITY ALL CATS 1 3/8. RNP 0.30 DA 896/ HAT 524 ALL CATS, VISIBILITY ALL CATS 1 1/2. CHANGE INOP NOTE TO READ: FOR **INOPERATIVE** MALSR, INCREASE RNP 0.28 ALL CATS VISIBILITY TO 1 7/8 MILE AND RNP 0.30 ALL CATS VISIBILITY TO 2 MILES.

TEMPORARY CRANES UP TO 582 MSL BEGINNING 1.28 NM SOUTH OF **RWY 34R** (2016-ANM-1252-OE).

A1491/17

RNAV (GPS) Y **RWY 34R**, AMDT 2C...

LPV DA 908/ HAT 536 ALL CATS, VISIBILITY ALL CATS 1 1/2. LNAV/VNAV DA 921/ HAT 549 ALL CATS. LNAV MDA VISIBILITY CATS A/B RVR 4000.

TEMPORARY CRANES UP TO 582 MSL BEGINNING 1.28 NM SOUTH OF **RWY 34R** (2016-ANM-1252-OE).

A1494/17

ILS OR LOC RWY 34R, AMDT 2C...

S-LOC 34R MDA 840/ HAT 468 ALL CATS, VISIBILITY CATS A/B RVR 4000, CATS C/D RVR 5000. SIDESTEP 34C MDA 840/ HAT 453 ALL CATS. VDP AT I-SEA 1.59 DME; DISTANCE VDP TO THLD 1.40 MILES. TEMPORARY CRANES UP TO 582 MSL BEGINNING 1.28 NM SOUTH OF **RWY 34R** (2016-ANM-1252-OE).

A1064/17

RNAV (RNP) Z **RWY 34C**, AMDT 2...

RNAV (RNP) Z **RWY 34L**, AMDT 2...

RNAV (RNP) Z **RWY 34R**, AMDT 1...

CHANGE ALL REFERENCE TO SEATTLE APP CON 125.9, 290.9 TO 133.65, 273.45..

END PART 2 OF 2

A1064/17

BAY VISUAL **RWY 16** R/C/L, AMDT 5...

HUSKY VISUAL **RWY 16** R/C/L, AMDT 5...

ILS OR LOC RWY 16C, AMDT 16...

ILS OR LOC RWY 16L, AMDT 7...

ILS OR LOC RWY 16R, AMDT 4...

ILS OR LOC RWY 34C, AMDT 3C...

ILS OR LOC RWY 34L, AMDT 1D...

ILS OR LOC RWY 34R, AMDT 2C...

MALL VISUAL **RWY 34** R/C/L, AMDT 6...

RNAV (GPS) Y **RWY 16C**, AMDT 3...

RNAV (GPS) Y **RWY 16L**, AMDT 5...

RNAV (GPS) Y **RWY 16R**, AMDT 2...

RNAV (GPS) Y **RWY 34C**, AMDT 2B...

RNAV (GPS) Y **RWY 34L**, AMDT 1B...

RNAV (GPS) Y **RWY 34R**, AMDT 2C...

RNAV (RNP) M **RWY 16R**, AMDT 2...

RNAV (RNP) M **RWY 34L**, AMDT 3...

RNAV (RNP) Z **RWY 16C**, AMDT 1...

RNAV (RNP) Z **RWY 16L**, AMDT 2...

RNAV (RNP) Z **RWY 16R**, AMDT 1...

END PART 1 OF 2

=====
EXTENDED AREA AROUND DEPARTURE
=====**CZVR VANCOUVER FIR**
-----**05/043**

CZVR AIC 2/17 'STANDARD INSTRUMENT DEPARTURE AND STANDARD TERMINAL ARRIVAL CHANGES' IS REVOKED.
REFER TO NOTAM CZVR 170511

05/042

CZVR THE FOLLOWING APPLIES TO ALL STAR PROC: WHEN A LOWER ALT IS ISSUED, PILOTS SHALL DESCEND ON THE STAR PROFILE TO THE ASSIGNED ALT. CHARTED RESTRICTIONS ABV THE ASSIGNED ALT REMAIN MANDATORY.

A3320/17

AIC 2/17 'STANDARD INSTRUMENT DEPARTURE AND STANDARD TERMINAL ARRIVAL CHANGES' IS REVOKED.
REFER TO NOTAM A3318/17

05/037

CZVR CABLE CROSSING BALL MARKERS MISSING 495032N 1212115W
(APRX 29 NM N HOPE AD) 673 FT AGL 3123 MSL

05/035

CZVR BLASTING ACT RADIUS 1000 FT CENTRE 511856N 1201139W
(APRX 35 NM NW SHUSWAP(SKWLAX FIELD) AD) SFC TO 1000 FT AGL.
1400-0200 DLY

Z0732/17

SANDSPIT **NDB** ZP 368KHZ **U/S**

Z0637/17

1700-2100 DLY
CYR163(M) COMOX ACT
F) 18000FT AMSL G) FL400

Z0638/17

1700-2100 DLY
CYR164(M) COMOX ACT
F) 18000FT AMSL G) FL400

05/021

CYR- 163(M) COMOX ACT 18000 FT MSL TO FL400 1700-2100 DLY

05/022

CYR- 164(M) COMOX ACT 18000 FT MSL TO FL400
1700-2100 DLY

04/086

CZVR HEL AND ARTILLERY AVALANCHE CTL RADIUS 15 NM CENTRE
562758N 1301041W (APRX 30 NM SSE CBW4)
562452N 1295938W (APRX 29 NM NNW CZST)
562336N 1295100W (APRX 28 NM NNW CZST)
563102N 1293102W (APRX 36 NM ESE CBW4)
SFC TO 8000 FT MSL
SR-SS

Z0455/17

ENDERBY **VOR** YNY 115.2MHZ **U/S**

04/084

YNY- ENDERBY **VOR** 115.2 **U/S**

Z0267/17

MON-SAT SR-SS
BLASTING ACT RADIUS 1 NM CENTRE 543210N 1283956W
(APRX 5 NM NW CYXT AD)
F) SFC G) 1000FT AMSL



04/045

CZVR TEMPO WILDLIFE REFUGE RADIUS 0.25 NM CENTRE 514518N 1184041W (APRX 32 NM ESE BLUE RIVER AD). PILOTS ARE REQUESTED TO AVOID OVERFLIGHT BLW 4000 FT MSL

03/091

CZVR USER PREFERRED ROUTE (UPR) TRIAL. ACFT MAY FILE EASTBOUND UPR WHEN ENTERING VANCOUVER FIR FM OAKLAND OCEANIC AIRSPACE PROVIDED THEY: -FLT PLAN A RTE AT LEAST 10 NM CLR OF ANY ACT CANADIAN CLASS F AIRSPACE. -COMPLY WITH DEST AD ARR ROUTING REQUIREMENTS FOR ACFT TRANSITING VANCOUVER FIR TO EASTERN DEST. ANY RTE REQUIREMENTS BEYOND VANCOUVER FIR REMAIN IN EFFECT. FOR INFO, COMMENTS OR CONCERNS CTC 604-586-4500

03/080

CZVR J541 BTN YYJ AND YXS NOT SUITABLE FOR VOR NAV

03/079

CZVR J523 BTN YZP AND YZT NOT AUTH FOR VOR NAV

03/075

CZVR PAL 284.0 AT PRINCE RUPERT U/S

03/036

CZVR CABLE CROSSING BALL MARKERS MISSING 494636N 1212204W (APRX 26 NM N HOPE AD) 689 FT AGL 1839 MSL

03/035

CZVR CABLE CROSSING BALL MARKERS MISSING 494736N 1212120W (APRX 26 NM N HOPE AD) 545 FT AGL 1894 MSL

03/033

CZVR VICTORIA TML PAL 290.8 AT ABBOTSFORD U/S

03/021

CZVR BLASTING ACT RADIUS 0.5 NM CENTRE 562730N 1301130W (APRX 31 NM SSE BOB QUINN LAKE AD) SFC TO 1000 FT AGL 1300-1400 (DT 1200-1300) AND 0100-0200 (DT 0000-0100)

03/019

CZVR V359 BTN YNY AND CHITE NOT SUITABLE FOR VOR NAV

03/016

CZVR V317-440 BTN YZP AND YJQ: MEA TO READ 6000 INSTEAD OF 4200

03/014

CZVR V368 BTN SPYSR AND ZKI NOT AUTH FOR VOR NAV

03/015

CZVR V324 BTN YDC AND YKA NOT SUITABLE FOR VOR NAV

03/013

CZVR V324 BTN YYD AND YWL CHANGE OVER POINT 86 NM FM YYD AND 123 NM FM YWL WITH A 8 NM GAP

03/012

CZVR V441 BTN WIGNO AND BOOPY NOT SUITABLE FOR VOR NAV

=====
EXTENDED AREA AROUND DESTINATION
=====

KZSE SEATTLE FIR/UIR

05/718

AIRSPACE R6714A ACT SFC-7000FT

05/216

AIRSPACE UNMANNED ROCKET WI AN AREA DEFINED AS 4NM RADIUS OF DSD116039 SFC-FL470 DLY 1500-0500

**05/210**

AIRSPACE UAS WI AN AREA DEFINED AS 11NM RADIUS OF
CVV320021 (8NM SE ORS) SFC-200FT AGL DLY 1300-0300

05/215

AIRSPACE UAS WI AN AREA DEFINED AS 1NM RADIUS OF
451229N1222342W (6.8NM S 5S9) SFC-400FT AGL DLY SR-SS

05/214

OBST WIND TURBINE FARM WI AN AREA DEFINED AS 3.5NM
RADIUS OF 465713N1200935W (14NM ESE ELN) 3036FT (389FT AGL) NOT
LGTD

05/132

OBST WIND TURBINE FARM WI AN AREA DEFINED AS
6.09NM RADIUS OF 460024N1184822W (21.4NM N PDT) 1741FT (400FT AGL)
NOT LGTD

05/018

OBST WIND TURBINE FARM WI AN AREA DEFINED AS 5.5NM
RADIUS OF 455439N1183531W (19.2NM NE PDT) 2448FT (400FT AGL) NOT
LGTD

04/189

OBST WIND TURBINE FARM WI AN AREA DEFINED AS
1.85NM RADIUS OF 453013N1203453W (6.4NM SE 35S) 2328FT (403FT AGL)
NOT LGTD

04/188

OBST WIND TURBINE FARM WI AN AREA DEFINED AS
3.24NM RADIUS OF 453553N1200942W (7.5NM S 1S8) 1603FT (403FT AGL)
NOT LGTD

A1511/17

ROUTE ZSE.
V187 ORTIN, WA TO MCCHORD (TCM) **VORTAC**, WA MEA 8000.

04/157

OBST WIND TURBINE FARM WI AN AREA DEFINED AS 2NM
RADIUS OF 453445N1203435W (4NM E 35S) 1863FT (391FT AGL) OUT OF
SERVICE

04/128

OBST WIND TURBINE FARM WI AN AREA DEFINED AS 5NM
RADIUS OF 455352N1201810W (10NM NW 1S8) 2600FT (330FT AGL) NOT
LGTD

A1323/17

V195 FORTUNA (FOT) **VORTAC** TO RED BLUFF (RBL) **VORTAC**
CHANGE OVER POINT FOT 40 NM.

04/009

OBST WIND TURBINE FARM WI AN AREA DEFINED AS 2NM
RADIUS OF 470730N1204124W (12NM W ELN) 2896FT (405FT AGL) NOT LGTD

A1283/17

ROUTE ZSE.
V121 NORTH BEND (OTH) **VOR/DME**, OR R-093 TO ROSEBURG (RBG) **VOR/DME**,
OR MEA 6000. OTH **VOR**.

A0173/17

ROUTE ZSE.
V4 BLAKO INT, WA MRA 8500.

12/367

OBST WIND FARM WI AN AREA DEFINED AS 10NM RADIUS
OF 455652N1183535W (14NM SW ALW) 1611FT (327FT AGL) NOT LGTD

A4784/16

KINGSLEY APP **CLSD**



=====
EXTENDED AREA AROUND DESTINATION ALTERNATE AIRPORT(S)
=====

KZSE SEATTLE FIR/UIR

Please see section EXTENDED AREA AROUND DESTINATION

=====
AREA ENROUTE DEPARTURE - DESTINATION
=====

KZSE SEATTLE FIR/UIR

Please see section EXTENDED AREA AROUND DESTINATION



[Company NOTAM]

=====
CREW ALERT
=====

SB007/14

SUBJECT: AUTO COST INDEXES
WHEN PLANNING A COST INDEX, 2 OPTIONS ARE AVAILABLE. PILOTS MAY EITHER SELECT A SPECIFIC COST INDEX NUMBER FROM THE LIST, OR THEY MAY SELECT "AUTO". WHEN PLANNING AN "AUTO" COST INDEX, THE SYSTEM WILL REFERENCE THE "TIME ENROUTE" OPTION AND ATTEMPT TO CHOOSE A COST INDEX WHICH CLOSELY MATCHES THIS VALUE. NOTE THAT THE "TIME ENROUTE" OPTION IS MEANT AS A GATE TO GATE TIME (AS INDICATED ON AN AIRLINE'S FLIGHT SCHEDULE, FOR EXAMPLE). IF A "TIME ENROUTE" OF 2:30 IS SELECTED, THE SYSTEM WILL SUBTRACT THE TAXI TIMES FROM THIS VALUE TO DETERMINE THE SCHEDULED AIR TIME. IT WILL THEN DETERMINE AND USE THE COST INDEX WHICH MATCHES THIS AIR TIME.

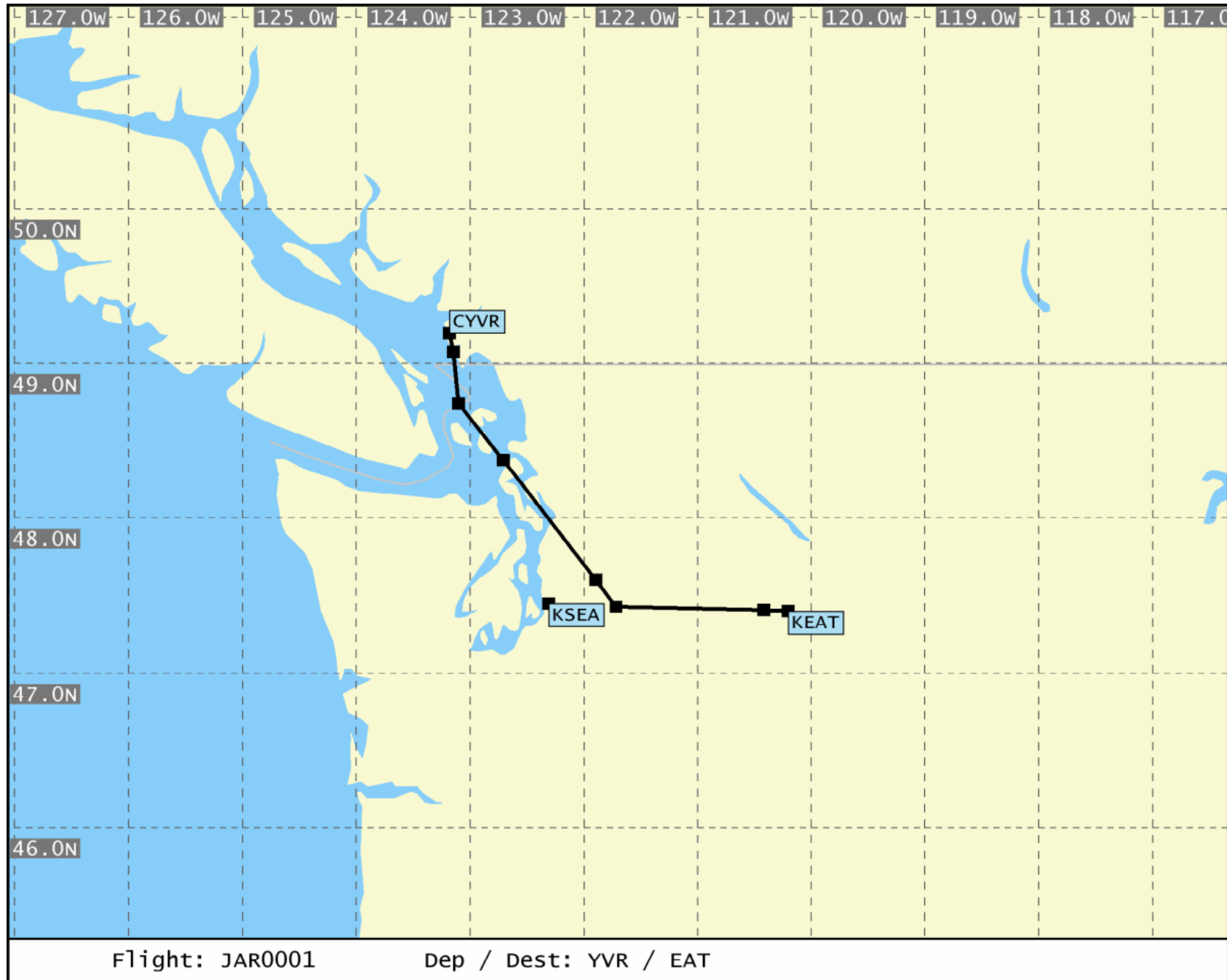
SB003/13

SUBJECT: FLIGHT RELEASE UNITS
ALL FLIGHT CREW: PLEASE PAY SPECIAL ATTENTION TO THE UNITS SELECTION WHEN GENERATING A FLIGHT PLAN. FAILURE TO IDENTIFY THE CORRECT UNITS WHEN REFUELING PRIOR TO FLIGHT CAN RESULT IN DEPARTING WITH INSUFFICIENT FUEL AND/OR AN ERRONEOUS PAYLOAD.

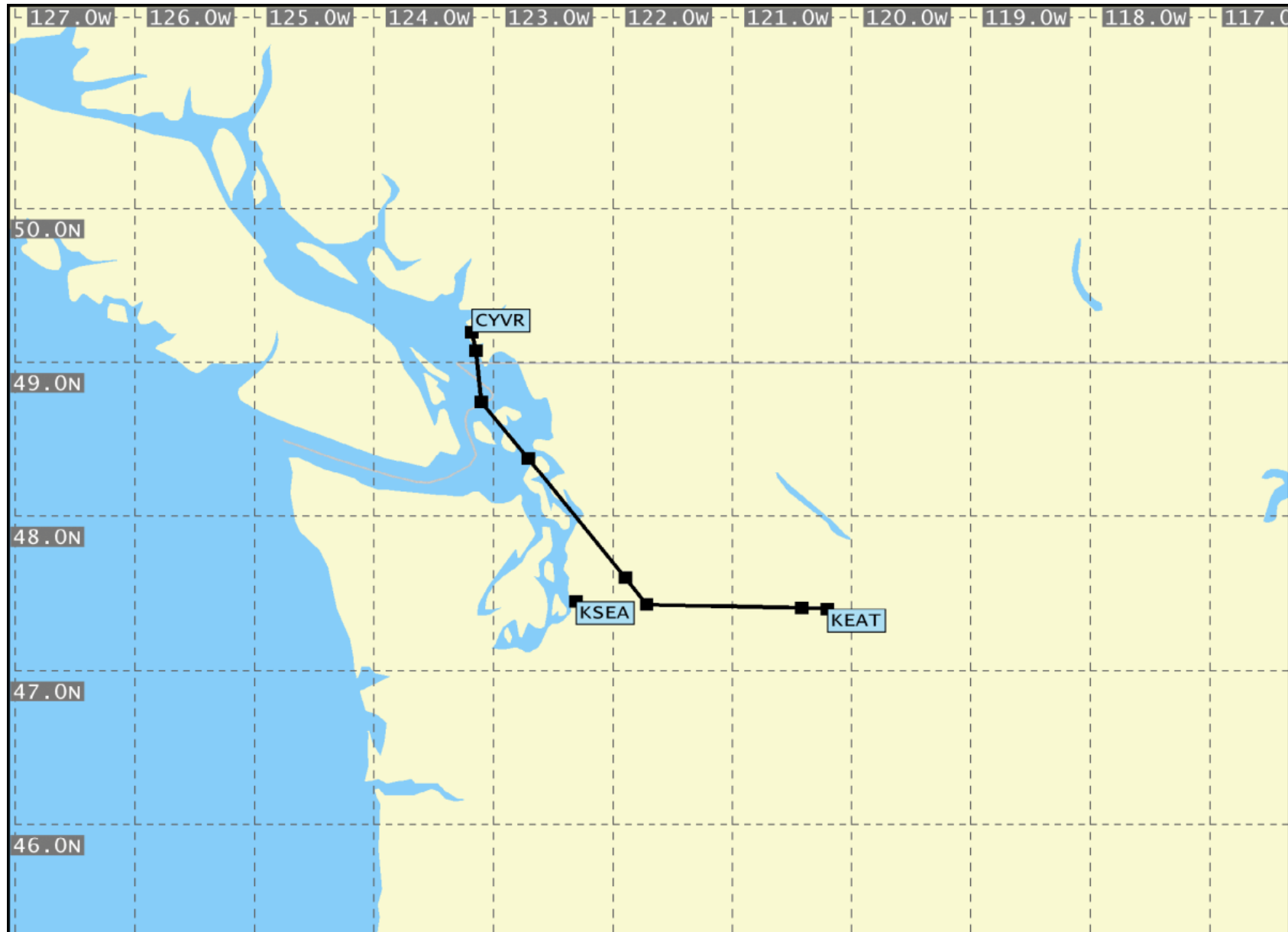
=====
CREW BULLETIN
=====

NIL

===== END OF LIDO-NOTAM-BULLETIN =====



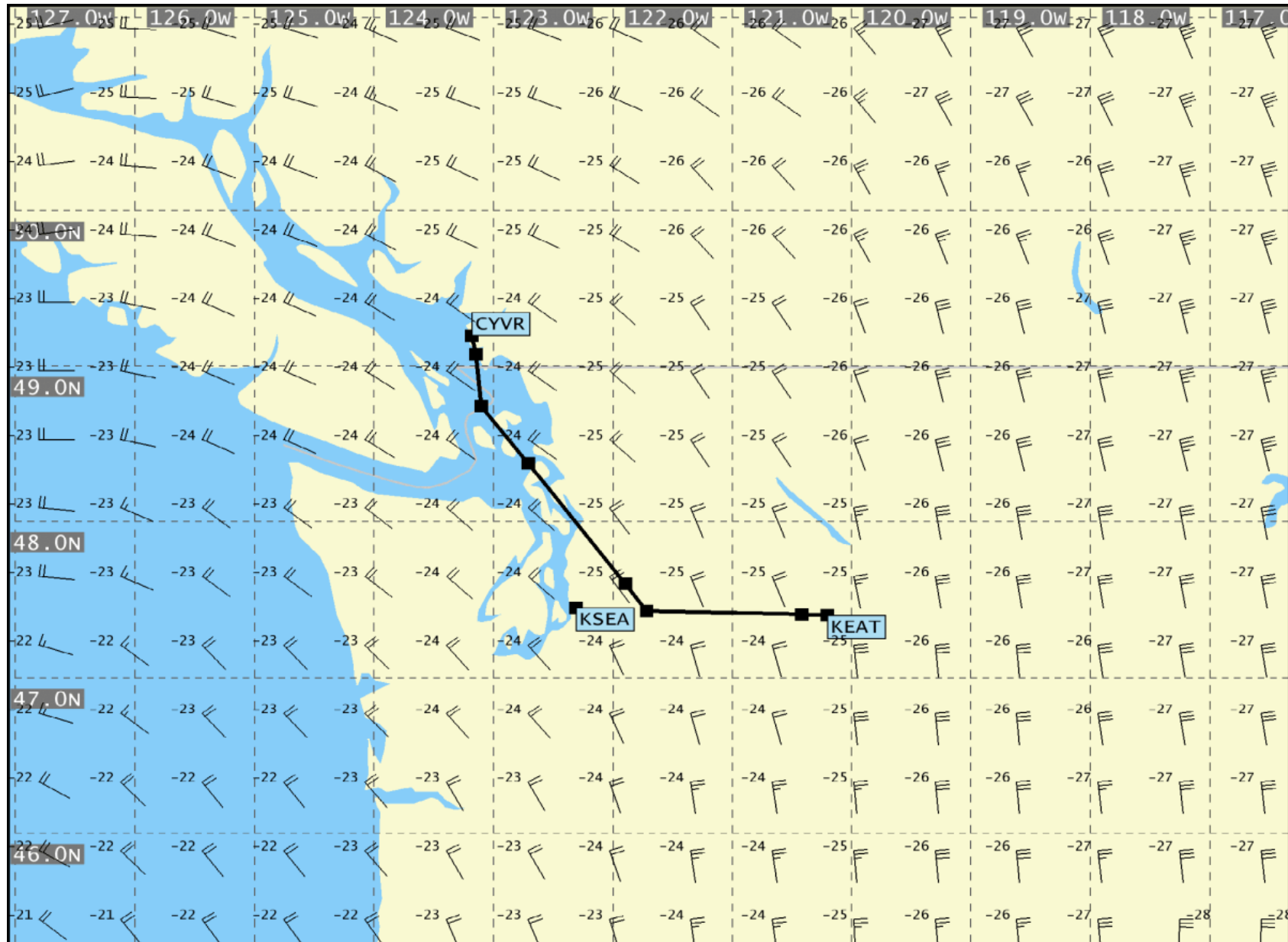
- Not for real world navigation -



SIG WX FL 250-630 WASHINGTON
 VALID 12 UTC ON 21.May.2017

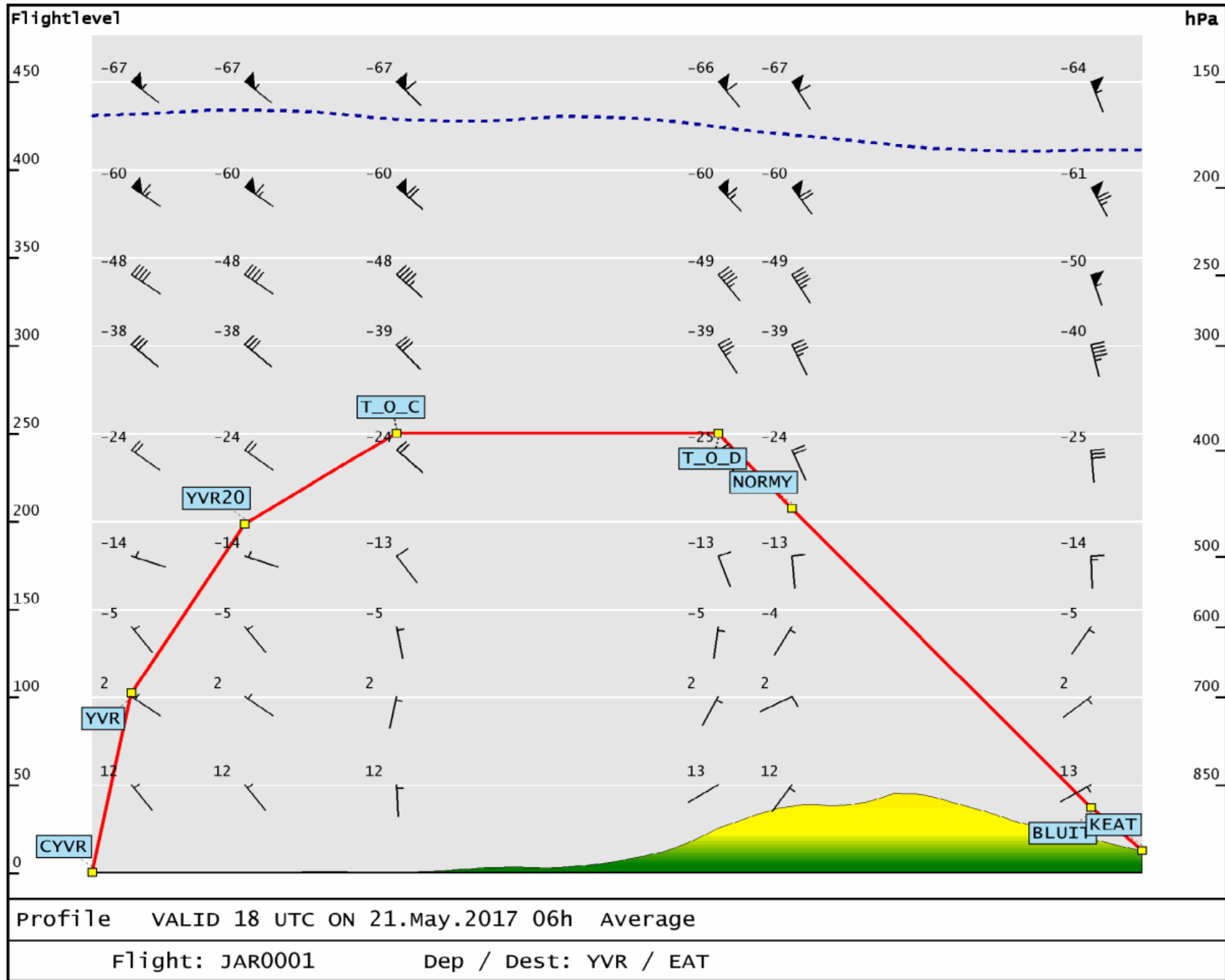
Flight: JAR0001

Dep / Dest: YVR / EAT



UAD VALID 18 UTC ON 21.May.2017 06h FL 240

Flight: JAR001 Dep / Dest: YVR / EAT





End of Document: Total Number of Pages: 23