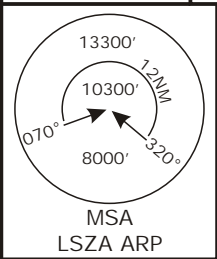


Valid for flight simulation use only - do not use for real life navigation

Swiss Radar LSAS_CTR 128.05	Milano Centre LIMM_CTR 127.45	Milano Approach LIMM_W_APP 126.75	Apt Elev <b>915'</b>
-----------------------------------	-------------------------------------	-----------------------------------------	-------------------------

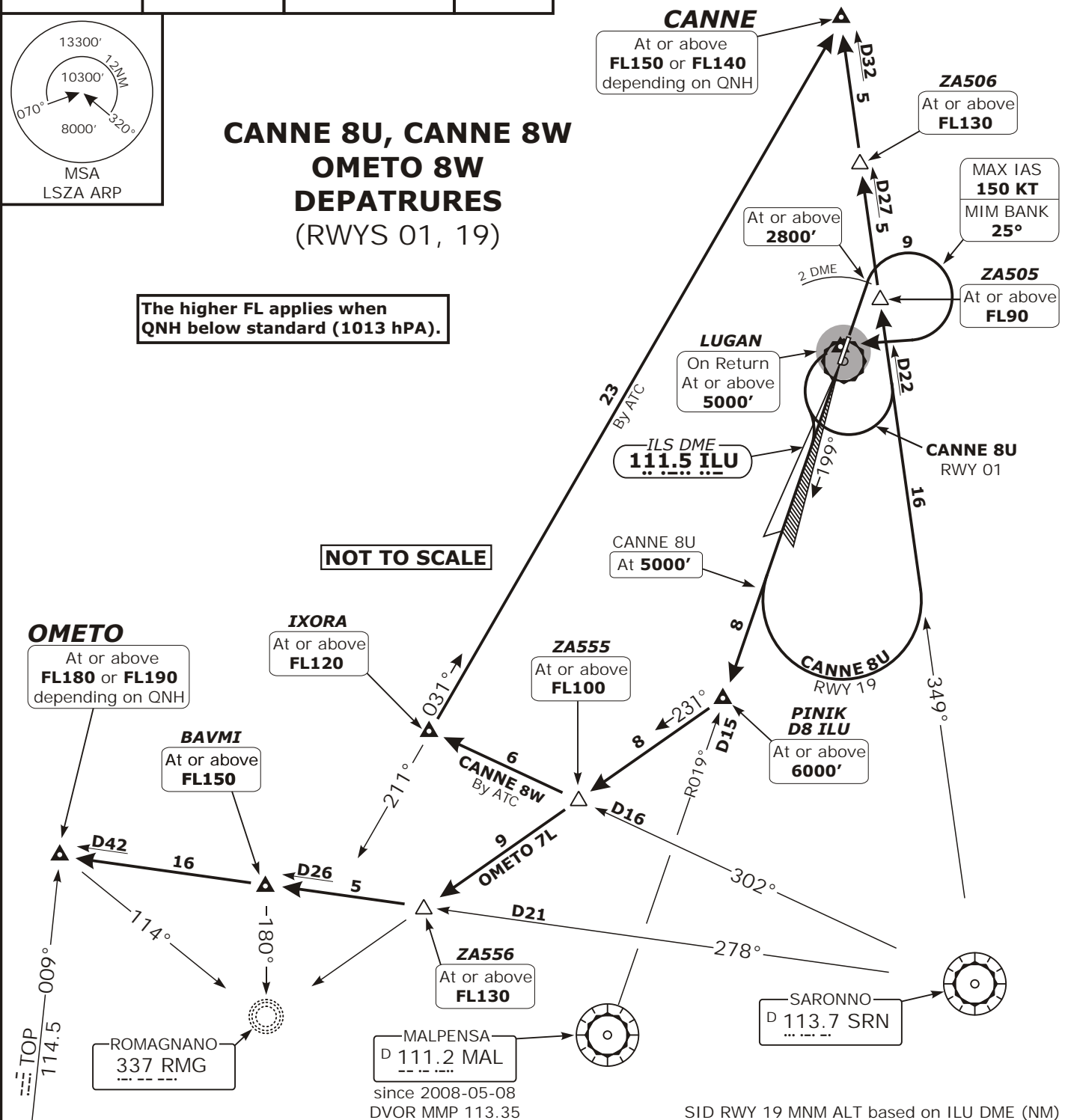
Trans level: By ATC Trans alt: 6000'



**CANNE 8U, CANNE 8W  
OMETO 8W  
DEPATRURES**  
(RWYS 01, 19)

The higher FL applies when QNH below standard (1013 hPA).

NOT TO SCALE



**Initial Climb Clearance by ATC**

SID RWY 19 MNM ALT based on ILU DME (NM)

1.0	2.0	3.0	4.0	5.0	6.0	7.0
1590'	2250'	2860'	3460'	4070'	4440'	4790'

RWY	TAKE-OFF	ALTITUDE
01	Climb straight ahead. Use Loc 01 back-beam for guidance. At ILU 2 DME, turn RIGHT (MAX IAS 150 KT, MNM bank 25°) to LUGAN.	Cross ILU 2 DME at or above <b>2800'</b> , LUGAN at or above <b>5000'</b> .
19	Climb straight ahead. Use Localizer 01 for track guidance until receiving MAL/MMP VOR. Follow R019 MMP/MAL.	

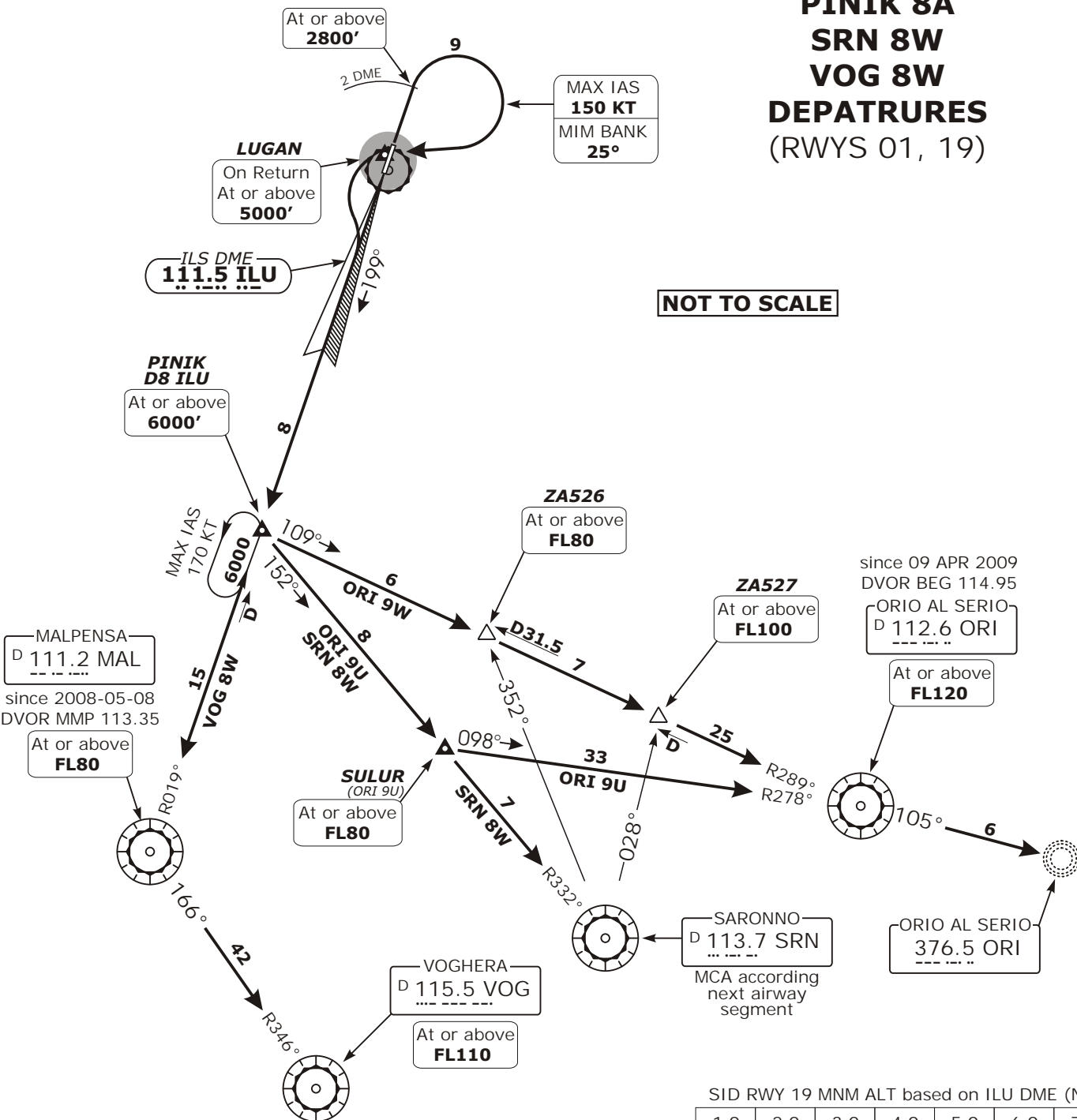
  

SID	ROUTING	ALTITUDE
OMETO 8W	Proceed to PINIK, 231° inbound RMG Lctr via ZA555 to ZA556, intercept SRN R-278 via BAVMI Int to OMETO.	Cross PINIK at or above <b>6000'</b> , ZA555 at or above <b>FL100</b> , ZA556 at or above <b>FL130</b> , BAVMI at or above <b>FL150</b> , OMETO at or above <b>FL180/FL190</b> .
CANNE 8U	At 5000' turn LEFT, intercept SRN R-349° to CANNE.	Cross ZA505 at or above <b>FL90</b> , ZA506 at or above <b>FL130</b> , CANNE at or above <b>FL140/FL150</b> .
CANNE 8W By ATC	Proceed to PINIK, 231° bearing inbound RMG Lctr to ZA555, intercept SRN R-302 to IXORA, 031° bearing from RMG Lctr to CANNE.	Cross PINIK at or above <b>6000'</b> , ZA555 at or above <b>FL100</b> , IXORA at or above <b>FL120</b> , CANNE at or above <b>FL140/FL150</b> .

Valid for flight simulation use only - do not use for real life navigation

Swiss Radar LSAS_CTR 128.05	Milano Centre LIMM_CTR 127.45	Milano Approach LIMM_W_APP 126.75	Apt Elev <b>915'</b>	Trans level: By ATC Trans alt: 6000'
-----------------------------------	-------------------------------------	-----------------------------------------	-------------------------	--------------------------------------

**ORI 9U, ORI 9W**  
**PINIK 8A**  
**SRN 8W**  
**VOG 8W**  
**DEPARTURES**  
(RWYS 01, 19)



NOT TO SCALE

**Initial Climb Clearance by ATC**

SID RWY 19 MNM ALT based on ILU DME (NM)

1.0	2.0	3.0	4.0	5.0	6.0	7.0
1590'	2250'	2860'	3460'	4070'	4440'	4790'

RWY	INITIAL ROUTING TO PINIK Int	ALTITUDE
01	Climb straight ahead. Use Loc 01 back-beam for guidance. At ILU 2 DME, turn RIGHT (MAX IAS 150 KT, MNM bank 25°) to LUGAN.	Cross ILU 2 DME at or above <b>2800'</b> , LUGAN at or above <b>5000'</b> .
19	Climb straight ahead. Use Localizer 01 for track guidance until receiving MAL/MMP VOR. Follow R019 MMP/MAL.	
SID	ROUTING	ALTITUDE
<b>ORI 9U</b>	Intercept SRN R-332 inbound to SULUR, intercept ORI R-278 inbound to ORI VORDME.	Cross SULUR at or above <b>FL80</b> , ORI/BEG VORDME at or above <b>FL120</b> .
<b>ORI 9W</b>	Intercept ORI R-289 inbound via ZA526 and ZA527 to ORI VORDME.	Cross ZA526 at or above <b>FL80</b> , ZA527 at or above <b>FL100</b> , ORI/BEG VORDME at or above <b>FL120</b> .
<b>PINIK 8A</b>	Proceed to PINIK, join holding at <b>6000'</b> .	Reach <b>6000'</b> at PINIK or before.
<b>SRN 8W</b>	Proceed to PINIK, intercept SRN R-332 inbound to SRN VORDME.	Cross PINIK at or above <b>6000'</b> , SRN VORDME according next airway segment.
<b>VOG 8W</b>	Proceed on MAL R-019 inbound via PINIK to MAL VORDME, intercept VOG R-346 inbound to VOG DME.	Cross PINIK at or above <b>6000'</b> , MAL VORDME at or above <b>FL80</b> , VOG VORDME at or above <b>FL110</b> .