

# CoPilot plugin for JD330

## (how to Install and Use)

### features:

- + animated 3d CoPilot model
- + can recognize and execute command
- + can speak
- + can read checklists
- + can operate with Events (flight parameters detection)
- + can execute SOP (Normal Procedures, Limited)
- + man and woman copilot model (woman only included this time)
- + scripts based (possible to edit/change Procedures/Text/etc)



# LICENSE AGREEMENT

By installing this Software product («JARDesign CoPilot» - X-Plane 11 plugin), you agree to be bound by the terms of this Agreement. If you do not agree to the terms of this Agreement, please, do not install or use the Product.

You may install the Software onto a single computer for your personal, noncommercial use subject to these conditions:

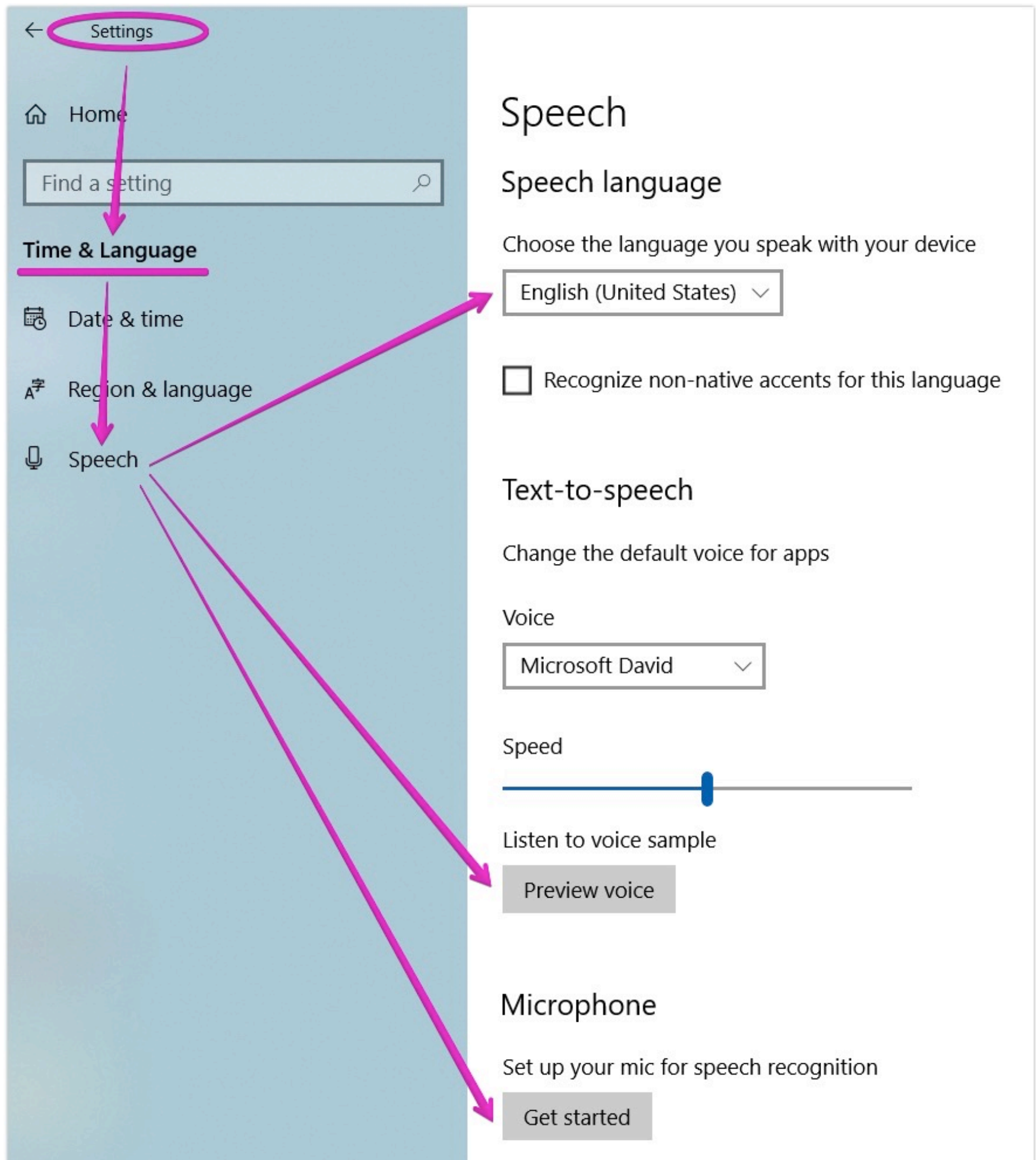
1. You may not copy, modify, rent, sell, distribute or transfer any part of the Software except as provided in this Agreement, and you agree to prevent unauthorized copying of the Software.
2. You may not reverse engineer, decompile, or disassemble the Software.
3. You may not sublicense or permit simultaneous use of the Software by more than one user.
4. The Software may include portions offered on terms in addition to those set out here, as set out in a license accompanying those portions.

THE SOFTWARE IS PROVIDED "AS IS" WITHOUT ANY EXPRESS OR IMPLIED WARRANTY OF ANY KIND INCLUDING WARRANTIES OF MERCHANTABILITY, NONINFRINGEMENT, OR FITNESS FOR A PARTICULAR PURPOSE.

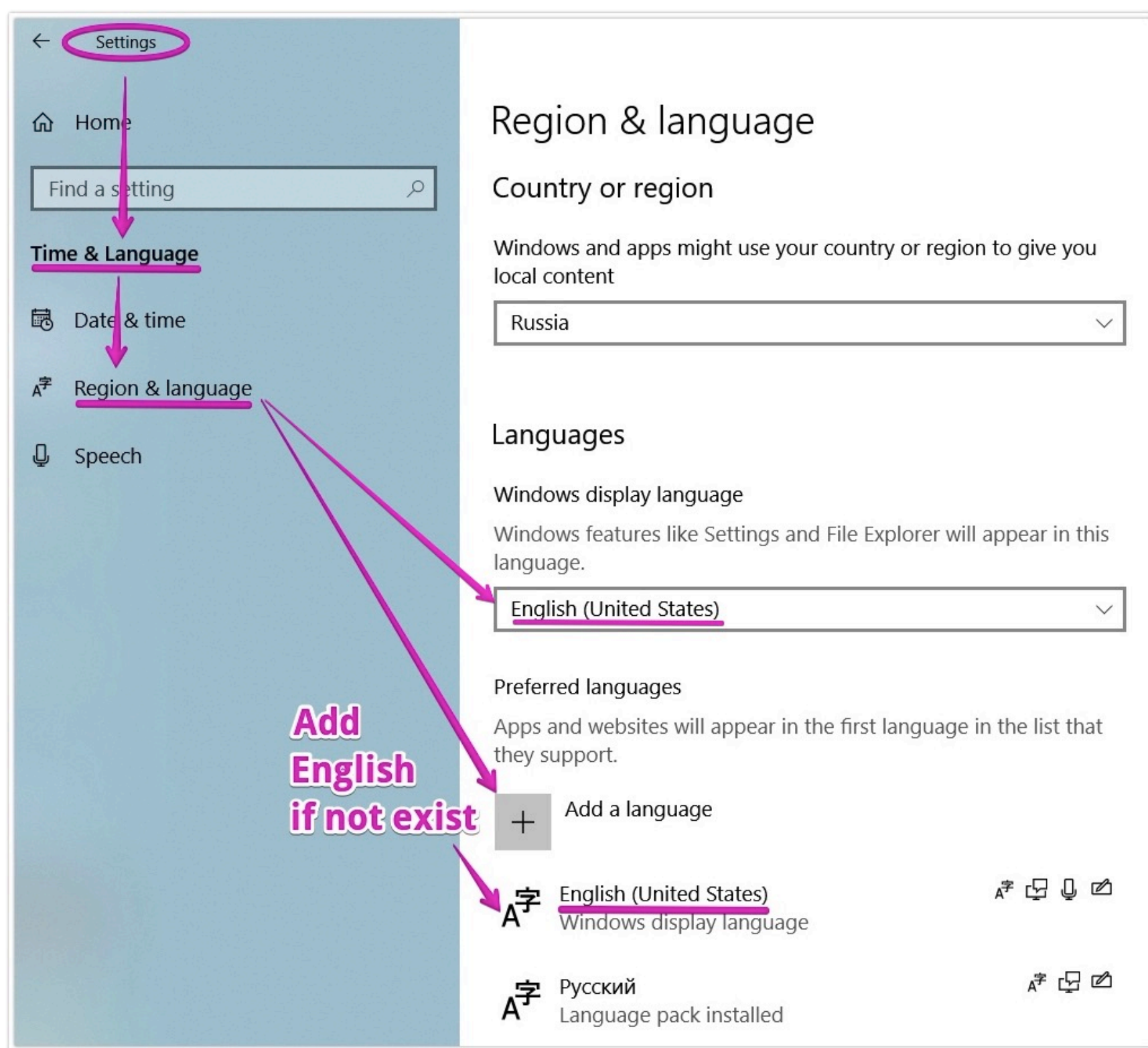
JARDesign Group does not warrant or assume responsibility for the accuracy or completeness of any information, text, graphics, links or other items contained within the Software.

# SETUP SPEECH RECOGNITION (WINDOWS 10)

Please be sure what US English language pack is already installed and English selected as Windows display language



Please select English language for Recognition, run voice preview, setup microphone.





Next turn recognition On

← Settings

Home

Find a setting

**Ease of Access**

Vision

Display

Cursor & pointer size

Magnifier

Color filters

High contrast

Narrator

Hearing

Audio

Closed captions

Interaction

Speech

Keyboard

Mouse

## Speech

Make your device easier to use if you have limited reach or strength.

### Talk instead of type

Use dictation to make text entry easier (US English only).

Press the Windows logo key + H to start dictation. On the touch keyboard, select the microphone button.

[Get more info about dictation](#)

### Dictate text and control your device using only your voice

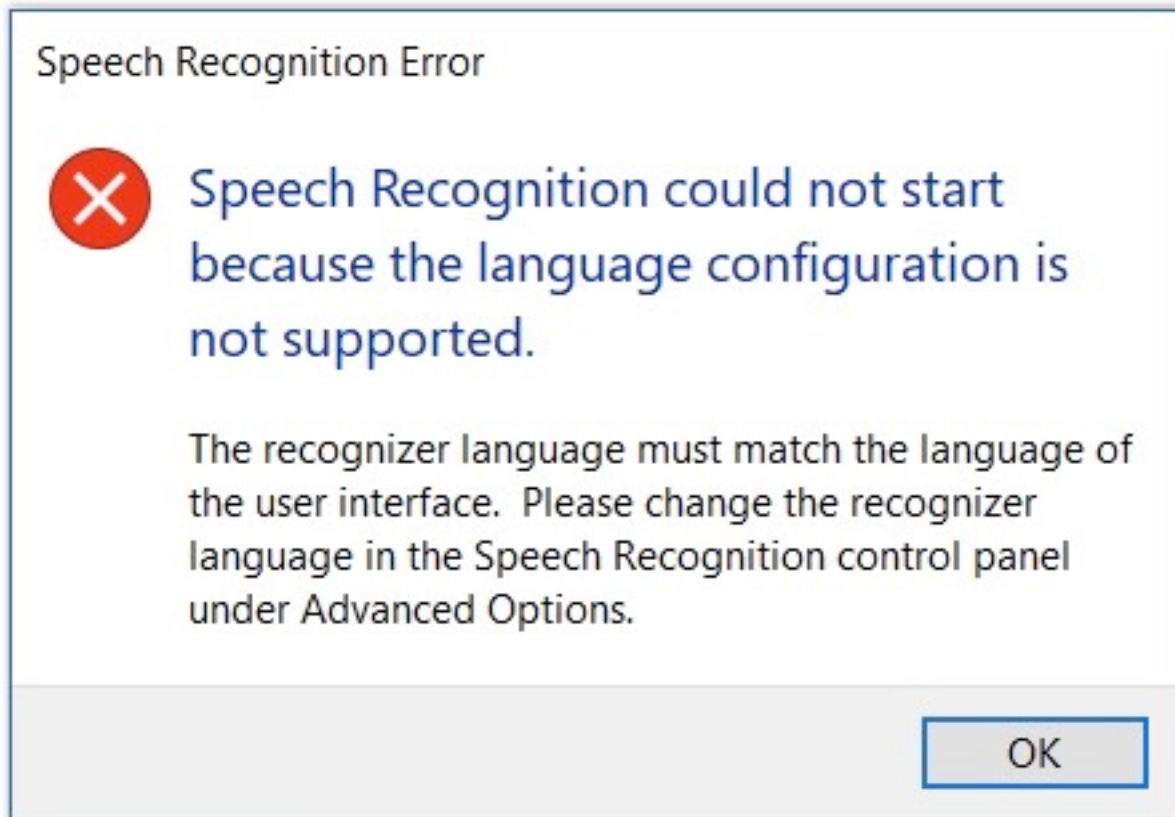
Turn on Speech Recognition

☒ On

Speech Recognition is only available for the following languages: English (United States, United Kingdom, Canada, India, and Australia), French, German, Japanese, Mandarin (Chinese Simplified and Chinese Traditional) and Spanish.

Press the Windows logo key + Ctrl + S to toggle Speech Recognition on or off.

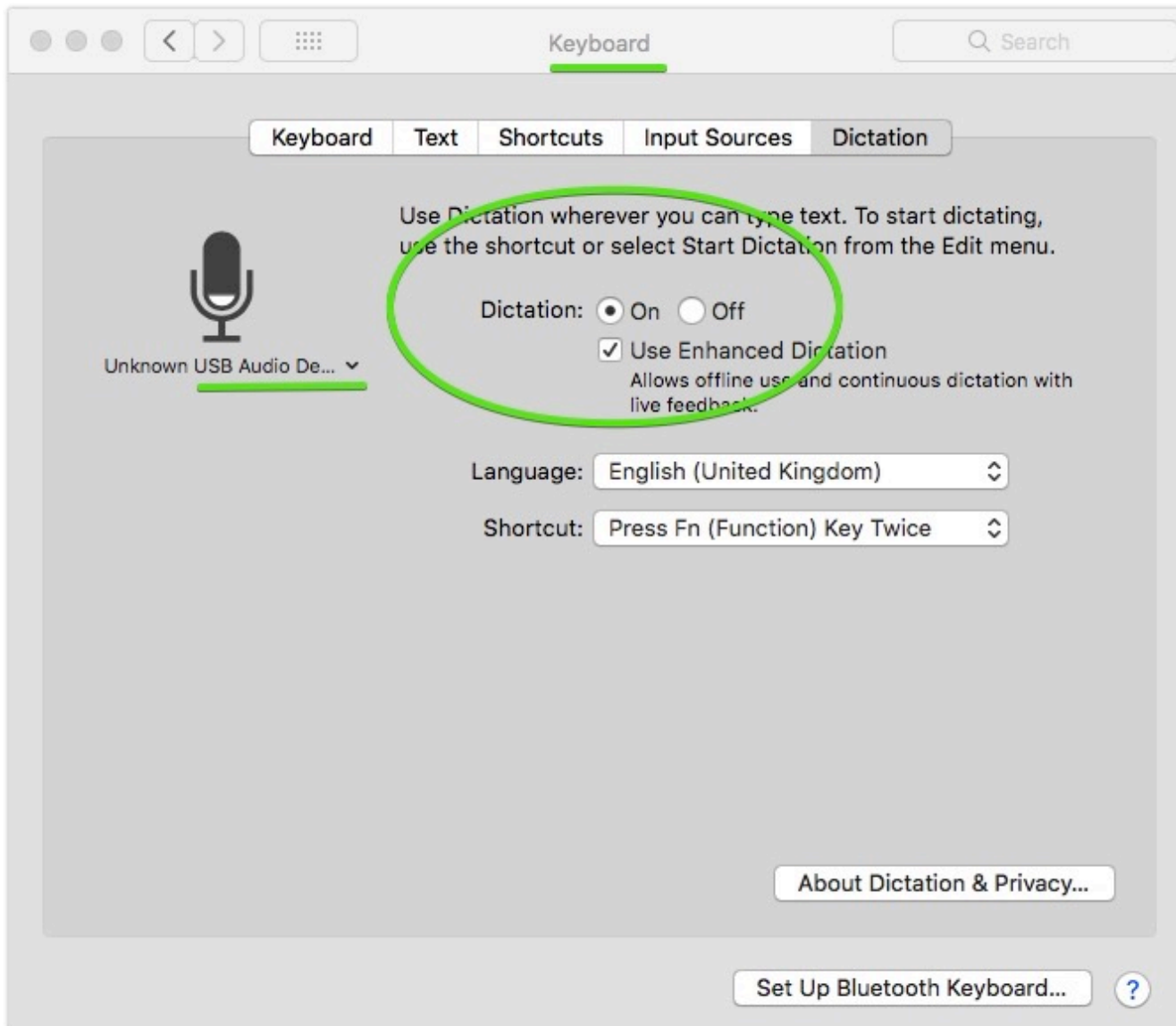
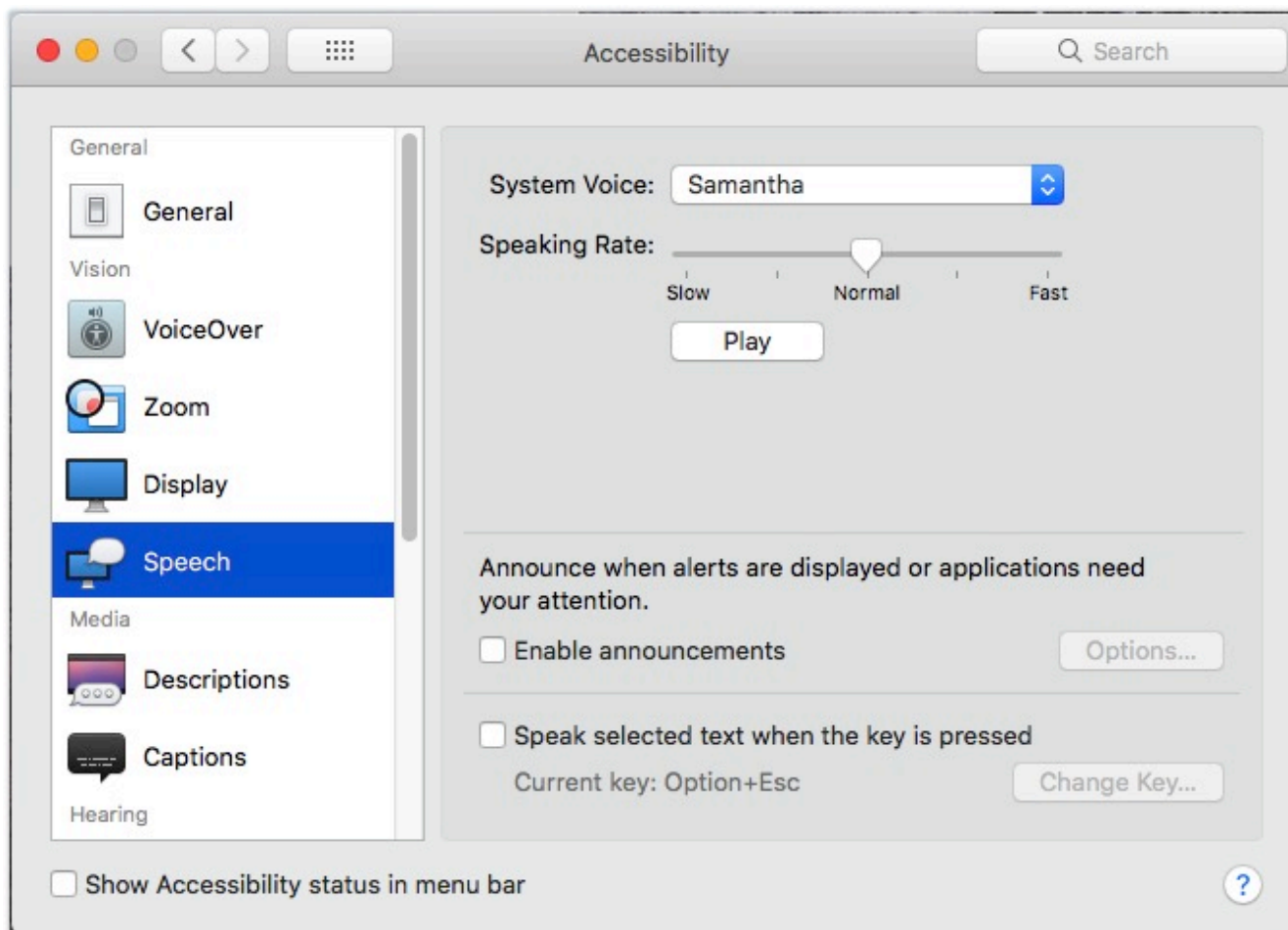
If you will get this error, you need setup English as user interface language (Windows display language) and English as your recognition language (language you speak with your device) and reload computer.



**Please use this basic manual if need:**

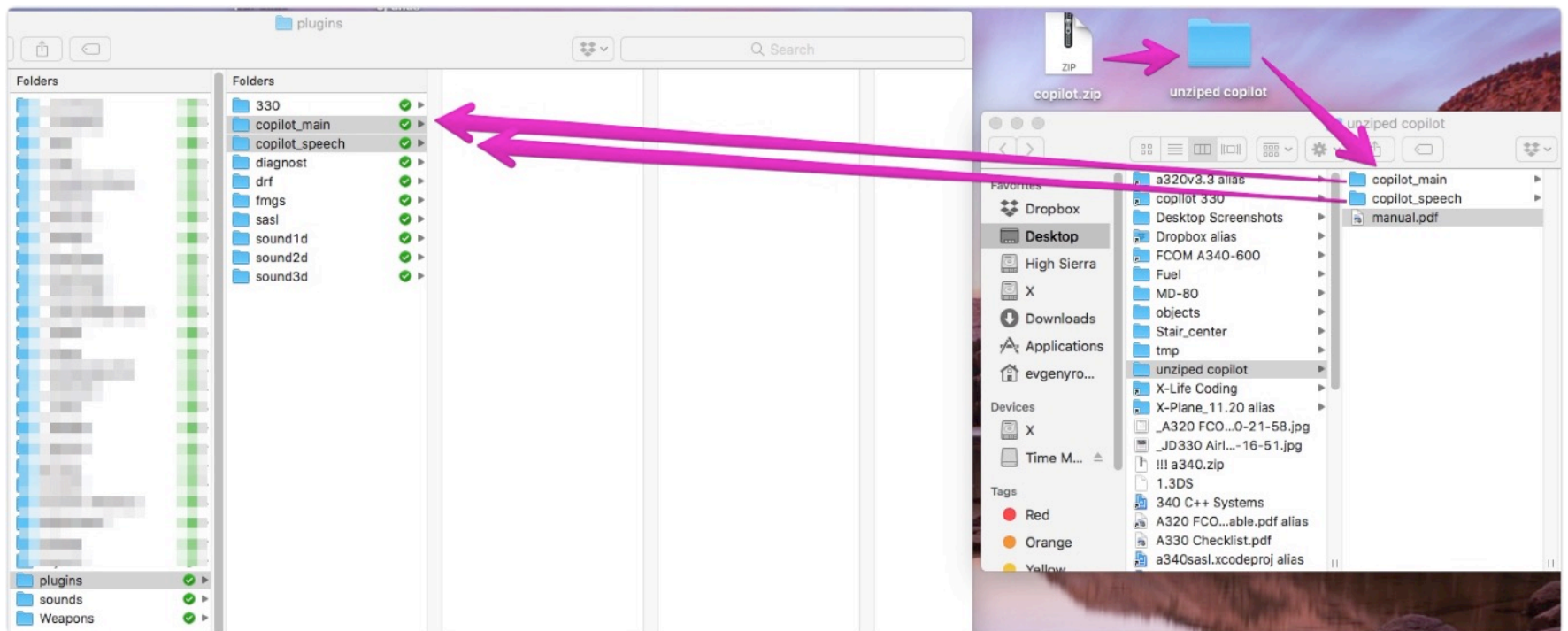
<https://www.windowcentral.com/how-set-speech-recognition-windows-10>

# SETUP SPEECH RECOGNITION (MAC OS)



# INSTALL PLUGIN FOLDERS

1. Find your JD330 (version 3.1) folder inside X-Plane 11/Aircrafts/
2. Open it and find "plugins" folder there
3. UnZip copilot distributive
4. Copy "copilot\_main" and "copilot\_speech" folders to your "../X-Plane 11/Aircrafts/JD330/plugins/" folder



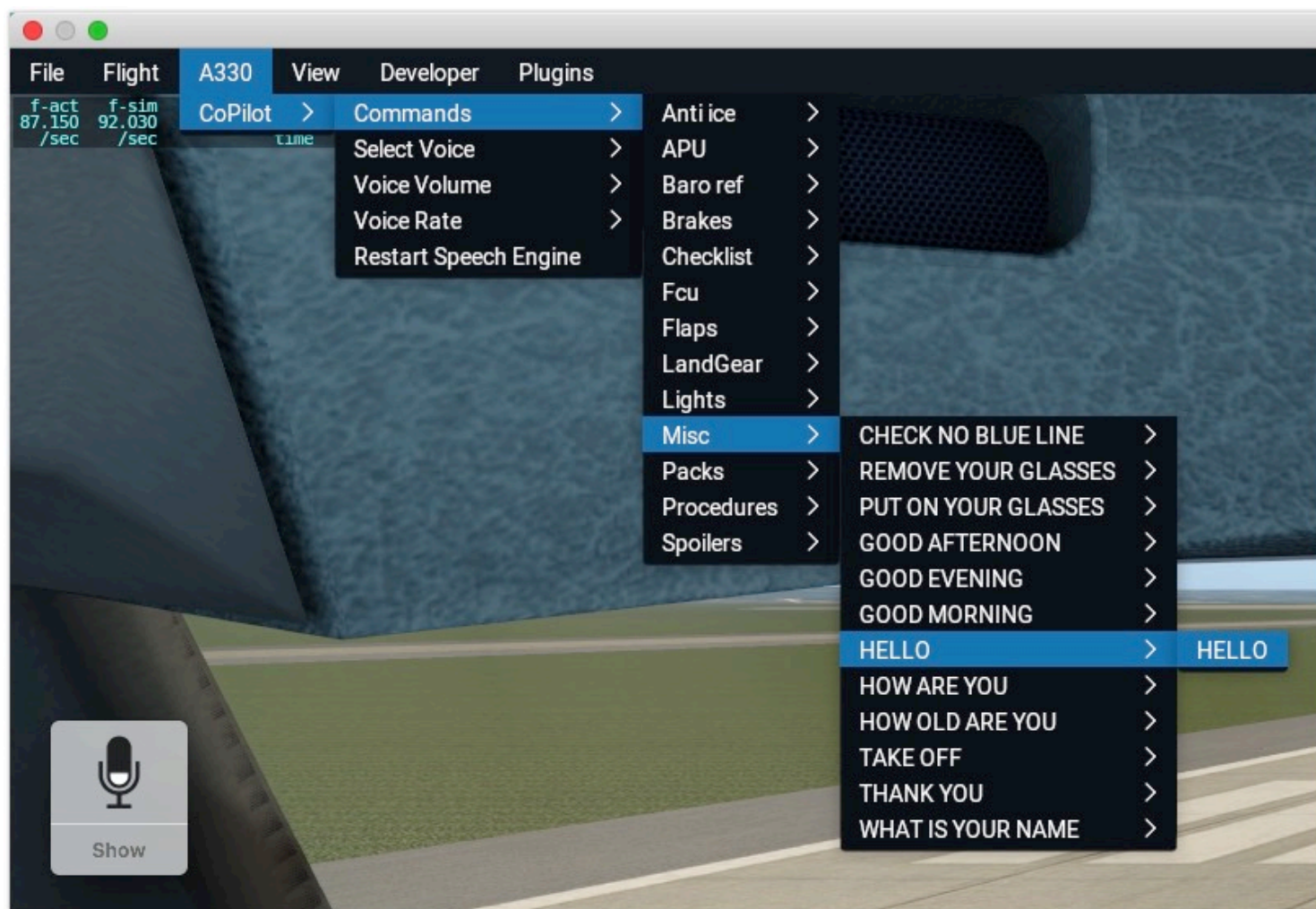
## HARDWARE SETUP

**You need (absolutely)** to have microphone or headset to use this plugin. Speech recognition should be setup and checked on your OS before copilot plugin installation.

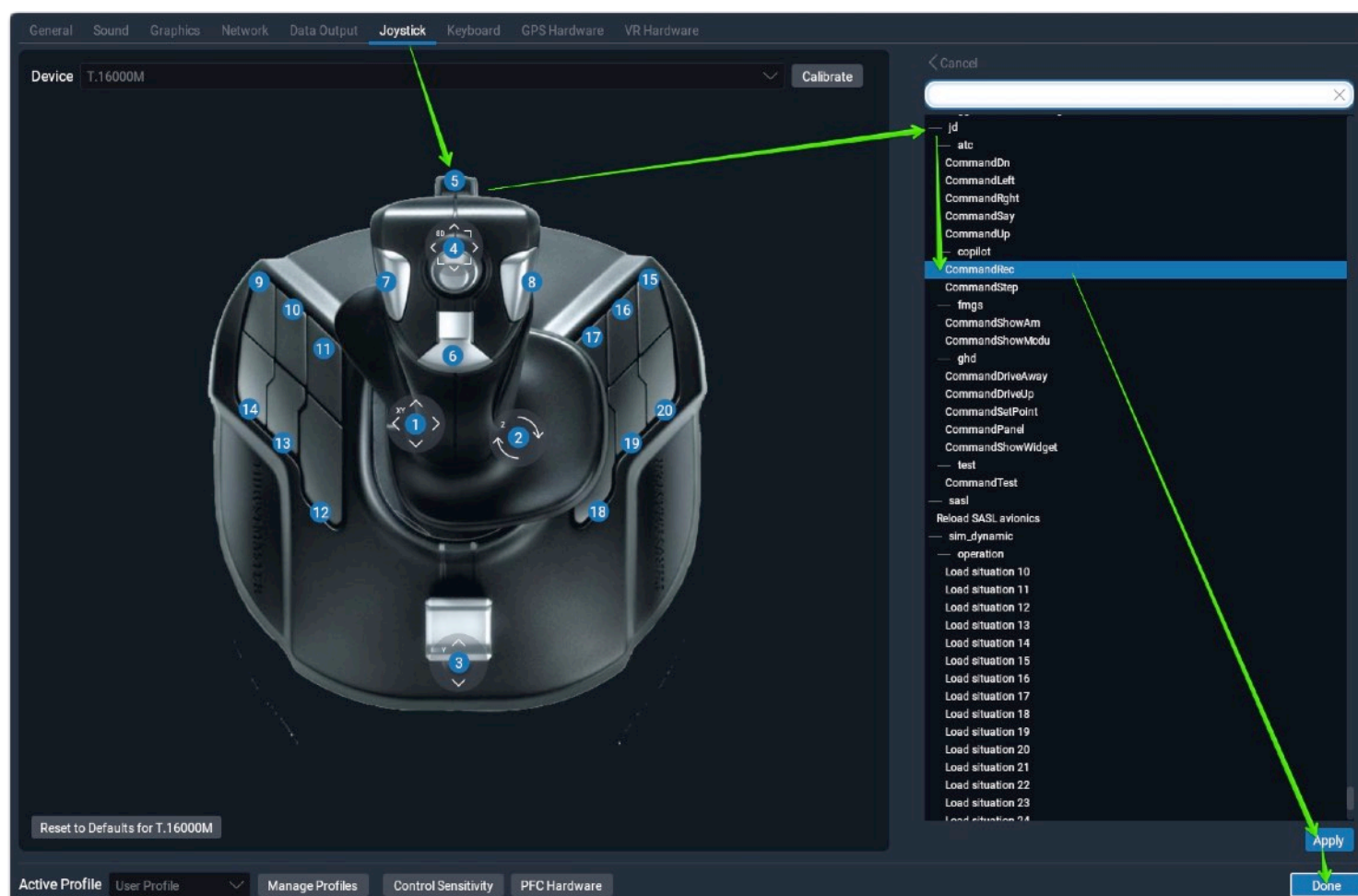


# HOW TO USE

Please use new Menu to setup CoPilot speech Volume, Rate (speed of speaking), Select voice. You may speak with CoPilot via voice or select commands via Menu:



If you prefer voice control, you need setup special joystick (sure, keyboard may be used too) button to jd/CommandRec.



You may look at CoPilot, hold this joystick button and say something like "Hello!" Typical pattern - press the button, say the text, release the button.

Speech will be recognize by Windows/Mac speech recognition system. Copilot will understand your command. If you need to know what command may be used (actual commands list of phrases) - please open A330 -> CoPilot -> Commands

Additional voice commands:

"Abort" - CoPilot will break current execution flow (break checklist execution, as example)

"Skip" - CoPilot will skip current execution line (not expect User voice/procedure entering more)

**PRODUCT WEBPAGE:**

<http://www.jar.design.org>

**SUPPORT**

<http://www.support.jar.design.org>

# Script system description.. (not need to know for regular users)

The CoPilot plugin script system has two entities - events and commands.

**EVENTS** (.txt files at ../copilot\_main/custom/events/ folder)

Event text file describe the list of conditions under which an event occurs, the list of actions that the pilot will execute when an event occurs, conditions for resetting event.

Example: PositiveClimb.txt - CoPilot will look at list of datarefs and will say "Positive Climb!" if aircraft have takeoff flight phase, airborne at least 25 ft, have positive acceleration and vertical speed more than 500 FT/MIN

#EVENT CONDITIONS

if:sim/custom/xap/fly\_phase==1

and:sim/cockpit2/gauges/indicators/radio\_altimeter\_height\_ft\_pilot>25

and:sim/cockpit2/gauges/indicators/airspeed\_acceleration\_kts\_sec\_pilot>0

and:sim/cockpit2/gauges/indicators/vvi\_fpm\_pilot>500

and:sim/custom/xap/fctr/mode<=1

#RESET CONDITIOND

reset:sim/custom/xap/fly\_phase!=1

#EXECUTE

say:Positive Climb!

**COMMANDS** (.txt files at ../copilot\_main/custom/events/ folder)

Command text file describe the list of voice input phrases to activate this command, the list of actions that the pilot will execute when this command will recognize.



Example: If user say Hello - CoPilot will answer "Hello, World!"

#VOICE INPUT FROM USER

input:Hello!

#EXECUTE

say:Hello, World!

**EXECUTE FLOW** Every string (executed one-by-one) do some job:

say:

say:Hello! - CoPilot should say "Hello!", next line of the flow will be executed immediately after the beginning of the speech.

saywait:

say:Hello! - CoPilot should say "Hello!", next line of the thread will be executed after the end of the speech.

pos:

pos:LgUp - The pilot will take smooth a pose stored in the ../custom/positions/LgUp.txt file.

posfast:

posfast:LgDn - The pilot will take a pose stored in the ../custom/positions/LgDn.txt file immediately

pause:

pause:1.5 - CoPilot will just wait (do nothing) 1.5 seconds.

drf:

drf:jd/fo/\_planshet=0 - Will set "jd/fo/\_planshet" dataref value to 0. Float/Integer/Double datarefs type supported. Array datarefs supported.

waitdrf:

waitdrf:sim/flightmodel/engine/ENGN\_N1\_[0]>20 - CoPilot will wait until "sim/flightmodel/engine/ENGN\_N1\_[0]" dataref value will be more than 20 (N1 of engine 1)

execute:

execute:Checklist/BeforeStart

Clear current execution flow and begin to execute script from ../custom/execute/checklist/BeforeStart.txt

waitanswer:

waitanswer:ANY - Copilot will wait untill any text was saying and recognize

waitanswer:Check - Copilot will wait untill "Check" was saying and recognize

waitanswer:Check

waitanswer:Checked - Copilot will wait untill "Check" or "Checked" was saying and recognize

var:

var:MYOWNVARIABLE=1.9 - Variable (double) will created with name "MYOWNVARIABLE" and value 1.9 Just after this, any scripts may use this variable and it value.

varinput:

varinput:PacksValue

waitanswer:PACKS OFF=0.5

waitanswer:PACKS ON=1 - Copilot will wait answer and variable "PacksValue" will set to 0.5 if "PACKS OFF" answer will come and 1.0 if "PACKS ON" will come from user microphone

break:

break: - current execute flow will erase until event will happen or command will come

cmdonce:

cmdonce:sim/flight\_controls/speed\_brakes\_up\_one - will execute "X-Plane command"  
"sim/flight\_controls/speed\_brakes\_up\_one"

cmdbegin:

cmdonce:sim/some\_command - will start to execute "X-Plane command" "sim/  
some\_command"

cmdend:

cmdend:sim/some\_command - will end to execute "X-Plane command" "sim/  
some\_command"

if:

and:

or:

elseif:

else:

endif:

Example with notes:

var:MYTMPVARIABLE=sim/custom/exampledataref

if:sim/custom/xap/engines/startsel==0

or:sim/custom/xap/engines/mswitch==1

*do something* (if "sim/custom/xap/engines/startsel" dataref equal 0 or "sim/custom/xap/engines/mswitch" dataref equal 1)

elseif:sim/custom/xap/engines/startsel==1

and:MYTMPVARIABLE==1

*do another* (if "sim/custom/xap/engines/startsel" dataref equal 1 and "MYTMPVARIABLE" variable equal 1)

endif: